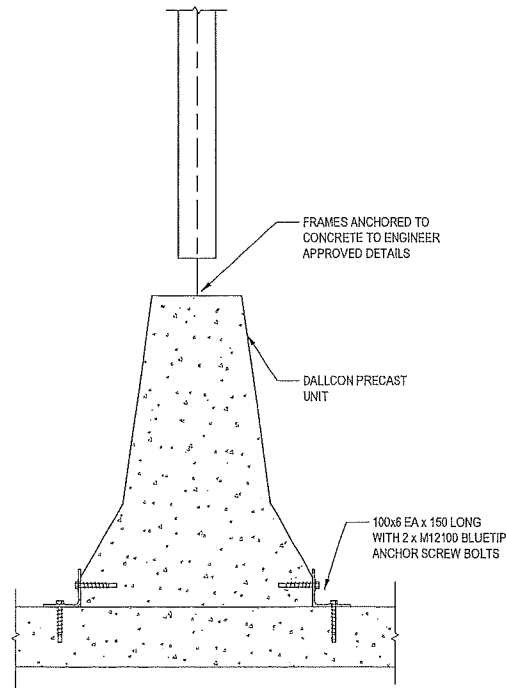
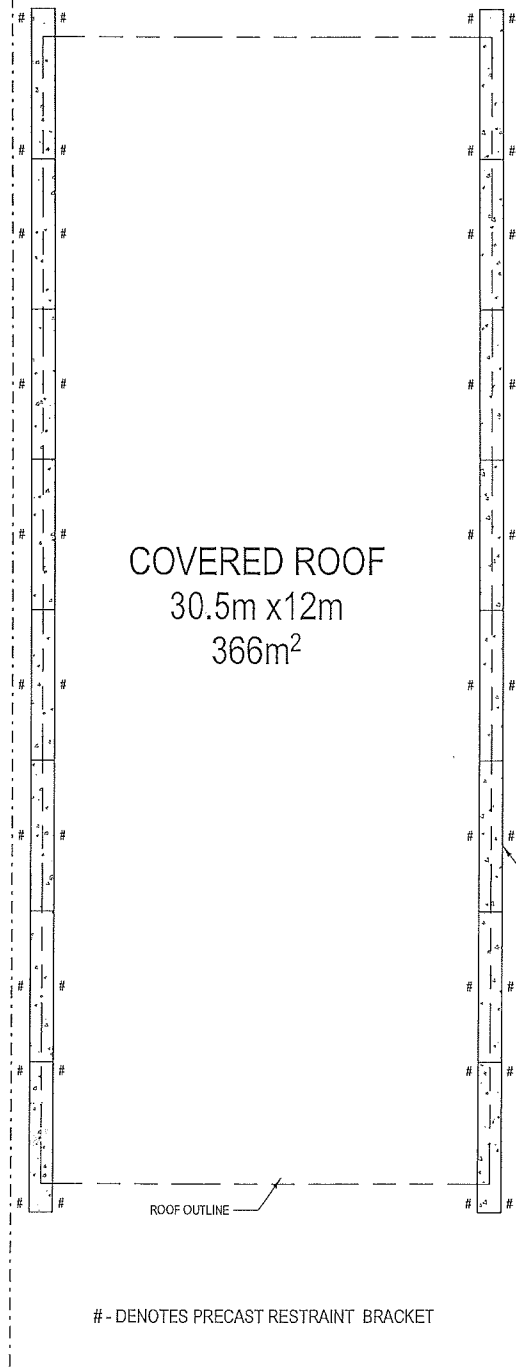
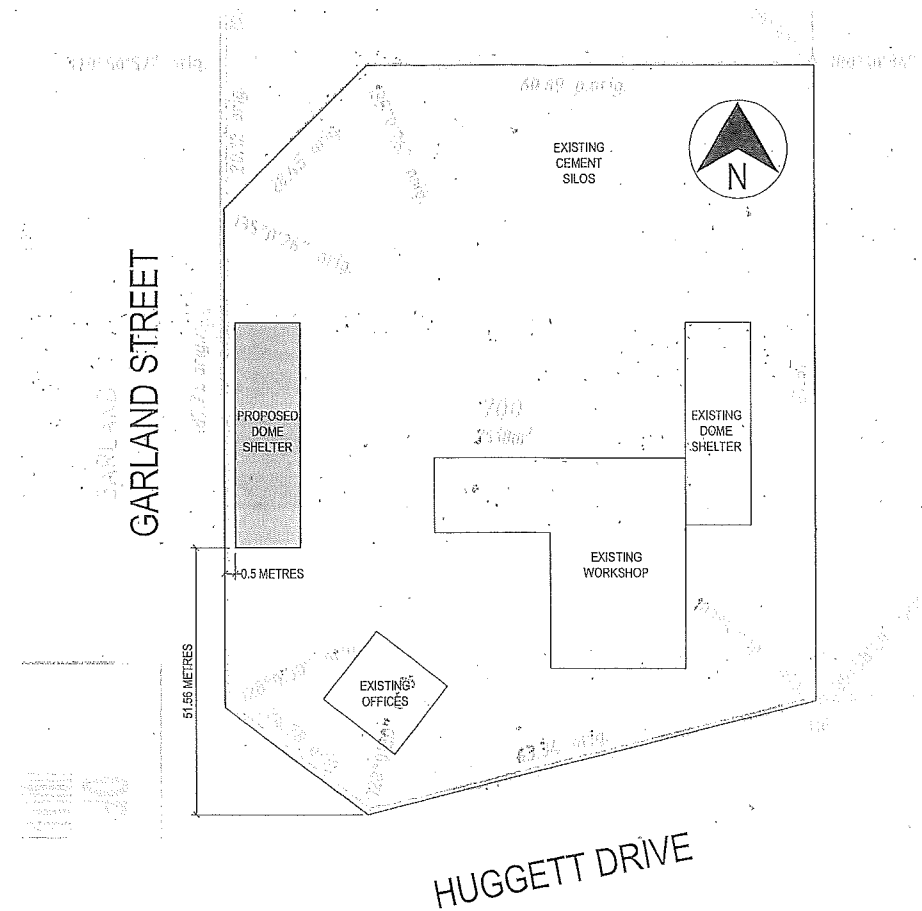


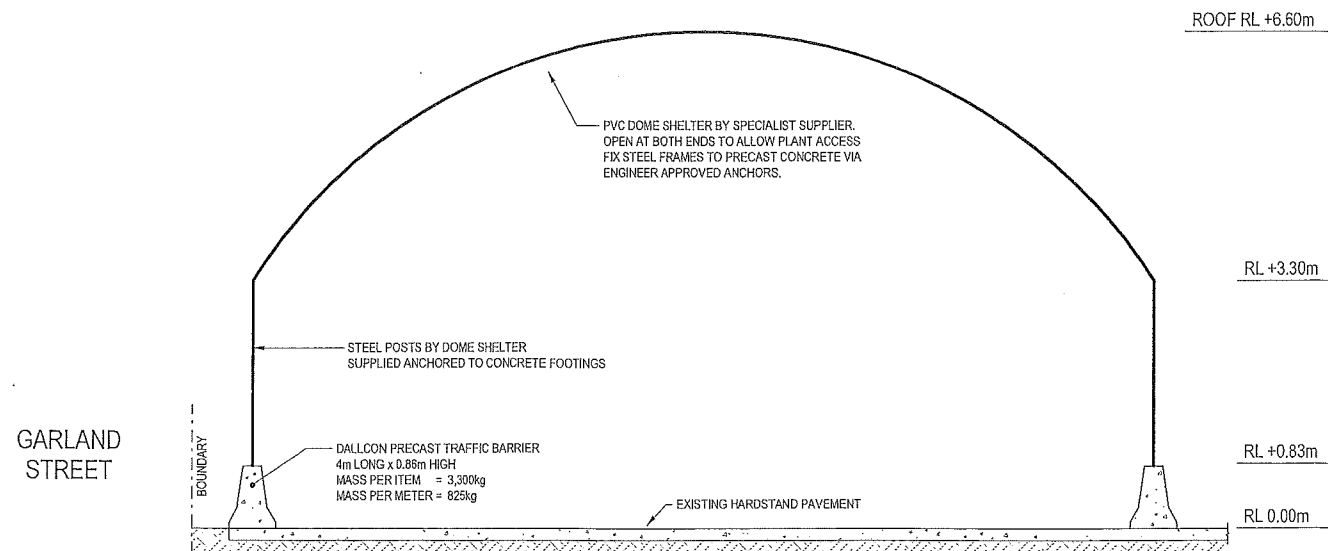
GARLAND STREET



TYPICAL PRECAST RESTRAINT DETAIL  
1:10



SITE PLAN  
1:500



TYPICAL SECTION  
1:50

DESIGN WIND SPEED TO AS 1170.2:2011  
ANNUAL PROBABILITY OF EXCEEDANCE - 1:500  
WIND REGION - A (NON-CYCLONIC) TERRAIN CATEGORY - 2  
WIND SPEEDS: REGIONAL - 45m/s SERVICEABILITY - 37m/s  
TOPOGRAPHY MULTIPLIER - 1.0

SIGNED: *Robin Salter* DATE: 01/12/2017  
ROBIN SALTER BE(Inst) FIEAust CPEng

INSTALLATION NOTE:  
NO WALL CLADDING OR SHADE SAIL TO BE FIXED BETWEEN DOME SHELTER COLUMNS WITHOUT ENGINEERING APPROVAL.

STRUCTURAL SET

DATE	DESCRIPTION
12/2017	ISSUED FOR COUNCIL APPROVAL
12/2017	ISSUED FOR COUNCIL APPROVAL
11/2017	ISSUED FOR CLIENT APPROVAL

STATUS

**BUILDING PERMIT ISSUE**



CIVIL AND STRUCTURAL CONSULTING ENGINEERS  
UNIT 6 / 9 Playle Street Myaree WA 6154  
T: 08 9317 3331 E: info@rsaeng.com.au  
www.rsaeng.com.au

PROJECT

**DALLCON**  
PROPOSED DOME SHELTER  
#7 HUGGETT DRIVE, DALWALLINU

THE CONCEPTS, ENGINEERING AND INFORMATION CONTAINED IN THIS DOCUMENT ARE COPYRIGHT. USE OR COPYING OF THIS DRAWING IN WHOLE OR PART WITHOUT THE WRITTEN APPROVAL OF RSA PTY LTD CONSTITUTES A COPYRIGHT INFRINGEMENT. ©

TITLE				
PLAN, SECTION AND DETAILS				
SCALE U.I.D.	DESIGN ENG.	DRAWN BY	CHECKED BY	APPROVED BY
As indicated @ A1	P. BALDWIN	P. BALDWIN	R. SALTER	
PROJECT NUMBER	DRAWING NUMBER	REVISION		
17-0782	S1.01	C		