

THE DAILY NEWS

JULY 2026

WALGA Roadwise Award



Marc Bennett, Manager Works & Services and Jean Knight, Chief Executive Officer displaying the Roadwise Award



RoadWise Recognised

RoadWise Recognised acknowledges RoadWise Councils commitment to moving towards better practice in managing road safety performance on the local road network through awarding Points and Ribbons based on their local road safety action planned, implemented and/or evaluated

How it Works

Throughout the year, RoadWise Councils will be awarded Points for each road safety activity or intervention undertaken as per the RoadWise Framework. Points are allocated based on the

effectiveness, longevity and scale of the road safety activity and takes into account the capacity of the Local Government. An increase in Points over time indicates progress towards better road safety practices.

Annually, RoadWise Council's will be awarded Ribbons, highlighting their holistic approach to road safety, aligned to systems thinking. Ribbons will be awarded to a maximum of five and will re-set each year. To ensure this process is objective, equitable and transparent, a panel of independent specialists oversee the RoadWise Recognised initiative.

RoadWise Councils

There are 75 Local Governments registered as a RoadWise Council in WA. WALGA is proactively engaging, motivating and supporting these RoadWise Councils in adopting and applying policies and practices that make an effective and sustainable contribution to the achievements of national and state road safety objectives and targets.

Department of Transport Licensing Hours

The Shire of Dalwallinu offer licensing facilities on behalf of the Department of Transport. The licensing hours are set by the Department of Transport.

Please ensure you attend the offices early and allow adequate time for processing of your paperwork as the Department of Transport Licensing computers close at 4pm.



**Monday to Friday from
8.30am to 4.00pm**

Shire staff do not have access after that time to Licensing computers.

If you wish to contact the Department of Licensing their number is **131156** and their website is

<https://www.transport.wa.gov.au/licensing/licensing.asp>

Acting CEO Chit Chat



ACTING CHIEF EXECUTIVE OFFICER, Hanna Jolly

Our Chief Executive Officer Jean Knight is currently taking a well deserved break, and we hope she enjoys her time off. In her absence, I am acting in the role until mid-July.

With the start of a new financial year approaching, Councillors and Officers have spent recent months working on the 2026–2027 Budget. The Budget is scheduled to be considered for adoption at the Special Council Meeting on 21 July 2026. We look forward to sharing the adopted Budget with the community and outlining the projects and services it will support in the year ahead.

Last month our CEO Jean Knight and Manager Works and Services Marc Bennett attended the WALGA awards ceremony to receive a Roadwise Award that the Shire was awarded. The Shire of Dalwallinu received a 5-ribbon

status demonstrating a significant commitment to planning, implementing, monitoring and communicating road safety actions. Well done to Marc and Jean and everyone involved in this initiative.

School holidays are almost here, and we'd like to remind everyone that the Youth Lounge at the Dalwallinu Discovery Centre is open Monday to Friday throughout the break. The Youth Lounge offers a great range of activities, including board games, air hockey, a VR headset, a pool table, and table tennis—providing plenty of entertainment for young people aged 12 and over during the holidays. The Dalwallinu Recreation Centre will also be open for sporting activities on 7 and 14 July for children aged 8 and over.

Last month, the Shire President Keith Carter had the privilege of conducting a citizenship ceremony, to welcome four new Australian citizens to our community. The Shire was delighted to host this celebration of this important milestone with them and their families. It was followed by an afternoon tea with the new citizens, their families, Councillors and staff.

Thank you to everyone who attended the library on 10 June to hear Australian author Fleur McDonald speak about her

writing. We hope you enjoyed the opportunity to meet with Fleur to learn more about her work and connect with fellow community members over morning tea.

Community Wi-Fi has now been installed in the Kalannie Recreation Centre through the Strengthening Telecommunications Against Natural Disasters (STAND) Program. Please follow the instructions on the Community Wi-Fi signage displayed at the Centre. Dalwallinu Recreation Centre Wi-Fi installation will take place in July.

Just a reminder to all community members to ensure your contact details are up to date and to sign up for eRates if you have not already done so. All updates can be completed via the Shire website under the “Contact Us” section. To ensure you receive all relevant communications promptly it is important that your details are current before rates notices are issued in late July. The onus is on you to ensure these details are current with the Shire.

One final reminder to the community to follow the Shire of Dalwallinu Facebook page. We do advertise on our website and the TL and Kapers, however the easiest way to follow any news from the Shire is to follow our page or sign up to this monthly newsletter which is sent out by email.

Shire Council Meetings

Next Ordinary Meeting of Council - 5.00pm Tuesday 28 July 2026

Shire of Dalwallinu Council Chambers, 58 Johnston Street, DALWALLINU WA 6609

Members of the Public are Welcome to Attend

The public are invited to attend any Ordinary Council Meeting to ask questions of the Shire & Councillors. Ordinary Council Meetings are held on the fourth Tuesday of every month (except January) commencing at 5.00pm unless advertised otherwise.

A Word from the Shire President



SHIRE PRESIDENT, Cr Keith Carter

WALGA Safety Award

Congratulations to the Shire staff on receiving a safety award from WALGA. The award is for local road safety activities. It is great to see the staff continuing to have their hard work recognised as I know a lot of effort has been focused in this area. Well done Chief Executive Officer Jean Knight and Manager Works and Services Marc Bennett for your efforts.

Citizenship ceremony

On 16 June the Shire conducted a citizenship ceremony and we welcomed another four citizens to Australia. It is always an enjoyable part of the Shire Presidents tasks to accept the pledge of new Australians. Thank you to Megan Pipe and Gillian Barnes for the marvellous afternoon tea they provided.

Congratulations

I must give a hearty well done to the Shire staff. It is fantastic to be talking to people from outside the Shire and for them to comment during the conversation on how good the town and Shire is presenting. Everything from the playing fields and recreation centre, the Main Street and Memorial Park to the high standard of our roads, both sealed and gravel. It makes our job as Councillors easy and satisfying when we receive this feedback. Thank you to all the staff involved.

Rain

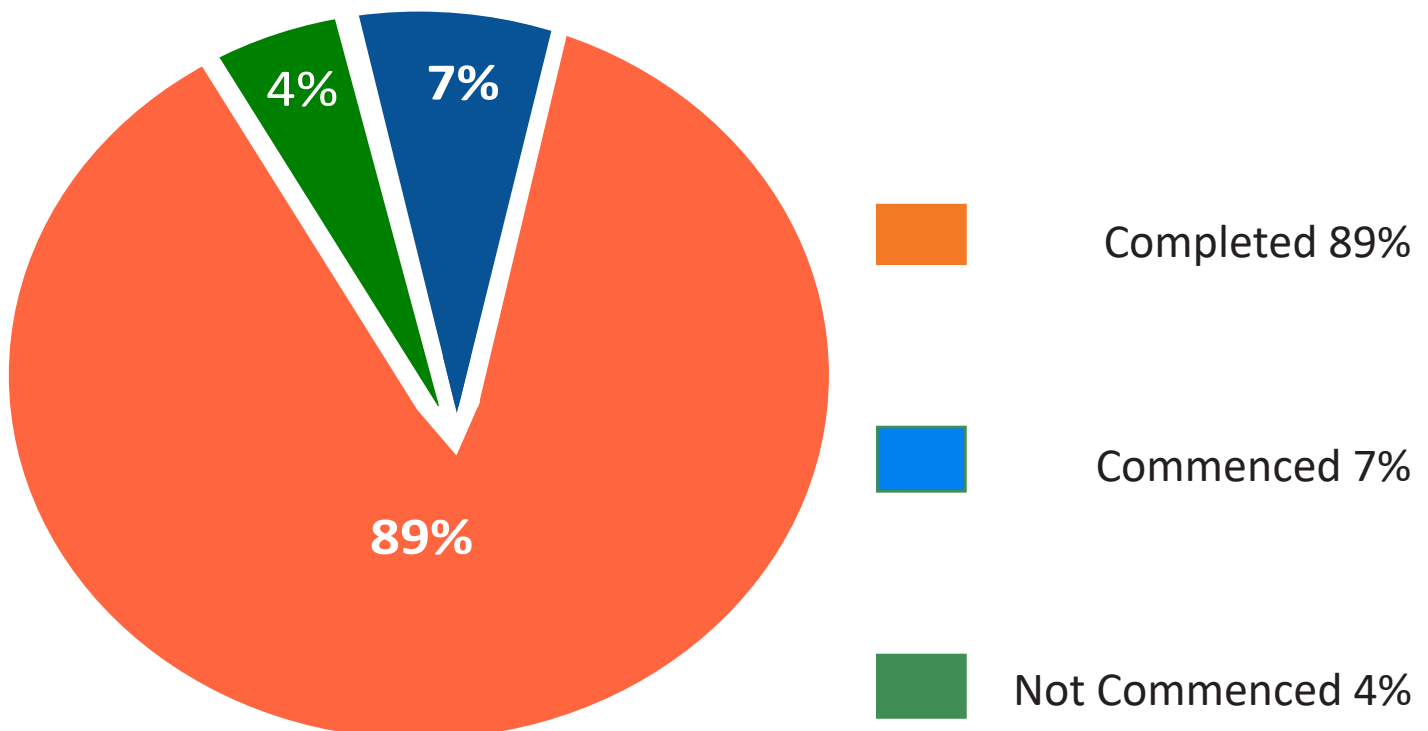
Marvellous to see the entire Shire receive some timely rain. As I commented last month, I would again like to remind you all to please be sensible in your road use when the roads are wet. I understand road closures are disruptive to farm and cartage businesses and Council is aware of this. We are having conversations and seeking ways to lessen the impact on industry in the shire when these closures occur.

Acting Chief Executive Officer

Thank you to Hanna Jolly for stepping up as Acting Chief Executive Officer for a short time to allow Jean to take some time off to recharge and refresh.

We appreciate all the hard work Jean contributes to maintain the Shire to the high standard that she does. We wish her all the best as she takes her very well-earned break.

Capital Projects 2025-2026



Elected Members of the Shire of Dalwallinu



Shire President
Cr Keith Carter
0428 643 051
crkcarter@dalwallinu.wa.gov.au



Cr Jemma Counsel
0428 642 085
crjcounsel@dalwallinu.wa.gov.au



Deputy Shire President
Cr Melissa Harms
0437 663 035
crmharms@dalwallinu.wa.gov.au



Cr Shannon Dawson
0429 922 592
crsdawson@dalwallinu.wa.gov.au

Cr Shane Hickleton
0421 201 256
crshickleton@dalwallinu.wa.gov.au



Cr Diane Cream
0417 908 317
crdcream@dalwallinu.wa.gov.au



Cr Steven Carter
0428 663 017
crscarter@dalwallinu.wa.gov.au

Place of wheat and wattle...

For Sale



FOR SALE

Lot 52 Nelson Street

BUNTINE

The Shire of Dalwallinu is seeking offers for the purchase of the above property. This property was known as the Buntine CWA and is situated on a 1,012^m² block.



Offers from \$22,000 (inc GST)

Further information specifying the conditions of sale is available from the Shire Office on 08 9661 0500 or email mcs@dalwallinu.wa.gov.au.

Viewing of the property can be arranged by contacting Sheree Sundstrom on 9661 0500.

Offers should be sent by **2pm, Friday 14 August 2026** to:

Sale of Lot 52 Nelson Street

Chief Executive Officer
Shire of Dalwallinu
PO Box 141
DALWALLINU WA 6609

Or

Email: tenders@dalwallinu.wa.gov.au

Census 2026 - Tuesday 11 August

From late July 2026, households will receive instructions on how to complete the Census. You can complete the Census as soon as you get your instructions, if you know where you'll be on Census night. Most households will get a letter with instructions to complete the Census online. If you get instructions to complete online but would prefer a paper form, you'll be able to request one.

Some points to remember about the Census Information collected

You need to complete the Census wherever you are staying on Census night.

If you're travelling in Australia on Census night, you still need to complete a Census form for wherever you are staying.

If someone is completing the Census form at your usual address, you'll need to be marked as 'away' but usually living at the dwelling.



Data collected in the Census matters

Data collected in the Census helps community organisations, businesses and governments make informed decisions. Government agencies reference Census results when assessing grant applications. The more correct the information, the more options become available to local governments. However, this is a direct result of correct information being collated.



Your information is safe.

Your personal information is private and protected by law. Private means the Australian Bureau of Statistics will not share your information with anyone. You can find out more about how they keep your information private on their website:

<https://info.census.abs.gov.au/privacy> Copy and paste this link into your browser.



Every answer matters in the Census

The Census is the most comprehensive snapshot of the country and tells the story of how we are changing. The Census is the only data collection activity that provides information for the entire country, including for small geographic areas and small population groups. One hundred percent of the information matters. Here is a link to an easy guide to the Census provided by the Australian Bureau of Statistics. [Easy Read factsheet.pdf](#) Copy and paste this link into your browser.



English not your first language?

You can get information about the Census in different languages at Language support Census Information. In-person help will be available at locations across Australia where you can get assistance in your language.



If you have a disability - You can get help

Get help to complete your form including accessible format information guides and forms.

<https://info.census.abs.gov.au/help/information-people-who-need-extra-support-and-people-living-disability> Copy and paste this link into your browser.



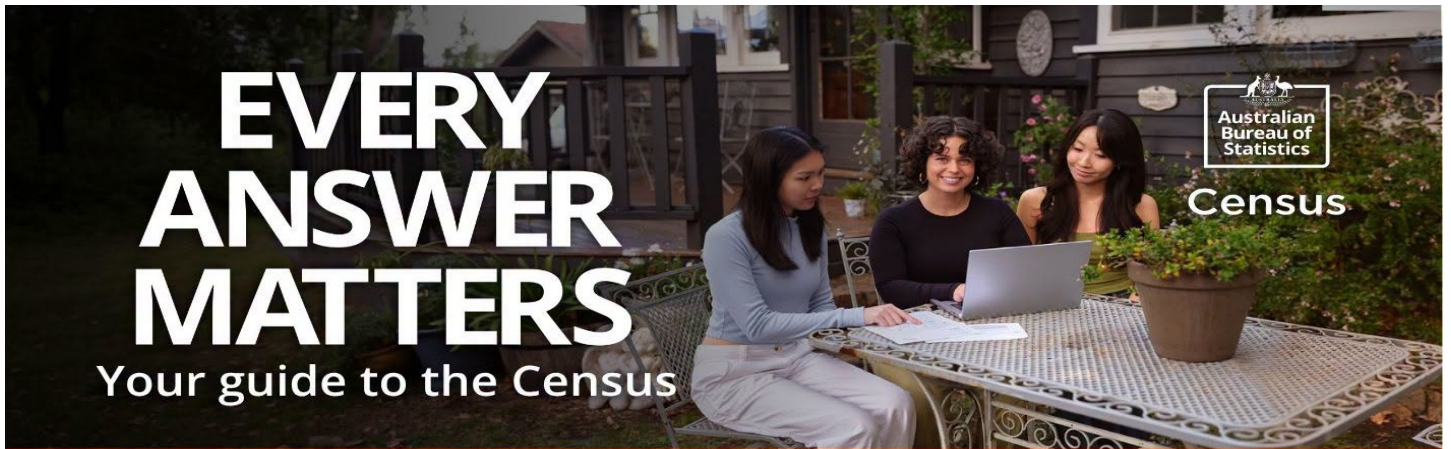
Please complete the Census with as much detail as possible. Census data is used to plan and deliver a variety of services across Australia. Census data informs planning for schools, health care, transport, infrastructure and business. It's also used to help plan local services for individuals, families and communities.



REMEMBER - ALL THE INFORMATION YOU PROVIDE REMAINS CONFIDENTIAL

Place of wheat and wattle...

Census 2026 - Tuesday 11 August



EVERY ANSWER MATTERS

Your guide to the Census

SAVE THE DATE | TUESDAY 11 AUGUST 2026

What is the Census?

Every five years, the Census counts every person and household in Australia.

It helps us understand how Australia is changing, and what we need now and in the future. It asks questions about your age, ancestry, what languages you speak and what you do for work.

If you know where you'll be on Census night, you can fill out the Census as soon as you get your instructions.

Your answers are private and protected by law.

We need to hear from everyone, because every answer matters.

You can complete the Census:



Online

Most households will get instructions when it's time to complete the Census.

1. Visit census.abs.gov.au
2. Enter your Census number and password
3. Complete the Census and submit

If you don't get instructions, you can request a Census number at census.abs.gov.au



Paper form

If you would prefer a paper form, you can request one from us.

1. Visit census.abs.gov.au/help or call our 24-hour automated paper form request service on 1800 130 250
2. Complete your paper form
3. Return to the ABS in the Reply Paid envelope provided



Visit from Census staff

Some people in remote areas, and people experiencing homelessness, will be visited by Census staff.

You need to complete the Census wherever you are staying on Census night.

Information and support will be available to help you complete the Census in your preferred way.



In-person help

We'll be offering Pop-up Hubs in public places, fill in the form sessions and information sessions. Find out more at census.abs.gov.au/find-us

WE'RE HERE TO HELP



For more information

Visit www.census.abs.gov.au/help



For help in your language

Call the Translating and Interpreting Service (TIS National) on **131 450**

Public Notice



PUBLIC NOTICE

Application Under Section 55 Health Act 1911

The Shire of Dalwallinu gives notice that an application (and general plan and description) under s.55 of the *Health Act 1911* has been forwarded to the Chief Health Officer of the Department of Health. The application is for retrospective approval of an existent sewage system (the system) located in Wubin. The system receives wastewater from three commercial premises and is discharged into Reserve #29878.

Interested parties may review the application documentation either at the Shire's Administration Building or under 'Public Notices' on the Shire's website (<https://www.dalwallinu.wa.gov.au/>) and provide a submission, if they so wish.

Submissions may be made to the Shire before the close of business,
Monday 27 July 2026 via the following delivery systems:

By hand: Shire Administration Building - 58 Johnston Street, Dalwallinu

Mail: PO Box 141 Dalwallinu WA 6609

Email: shire@dalwallinu.wa.gov.au

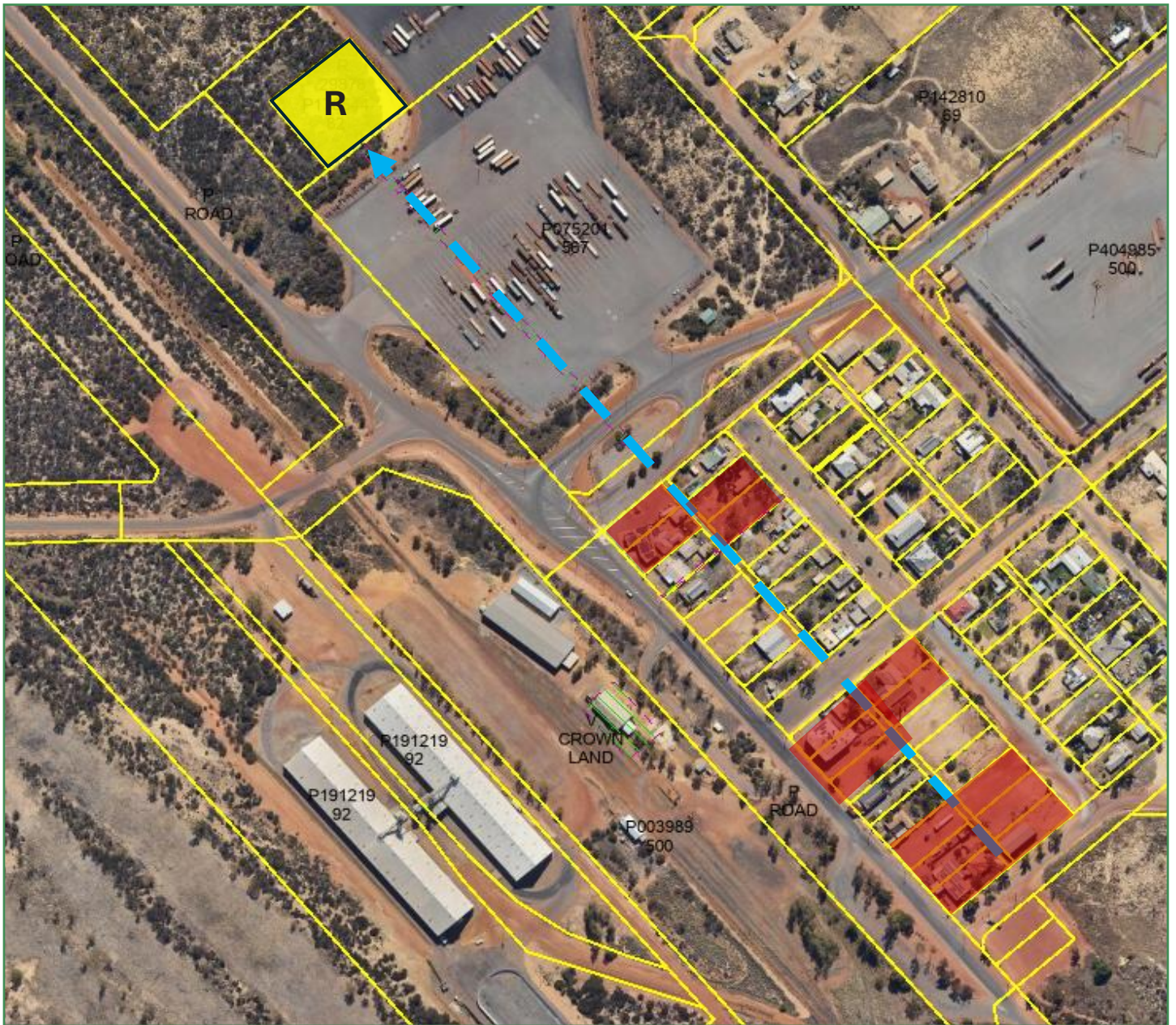
Jean Knight JP

CHIEF EXECUTIVE OFFICER

11 June 2026

Public Notice


General plan associated with the application under s.55 Health Act 1911



Map of Wubin WA – Location of the ‘Wubin system’ discharge pipe to Reserve #29878’

Sewage discharge pipe 

Reserve #29878 

Properties connected to discharge pipe 

Place of wheat and wattle...

Royal Flying Doctor Service - Heroes to Hub 2026



HEROES TO HUB 2026

Fuelled by Courage. Finished with Heart.

Saturday 11 July 2026

26km Fundraising Community Event Supporting the Royal Flying Doctor Service

A STORY OF GRATITUDE

Heroes to Hub was created by two Moora mums whose children were cared for and retrieved by the Royal Flying Doctor Service during life-changing medical emergencies in 2023 and 2024. Following an incredible first event that raised \$130,000 for RFDS in 2025, Heroes to Hub returns for another unforgettable day of community, courage and fundraising. The 26km distance represents the 26-hour surgery endured by young Ashlyn following her medical emergency.

Every kilometre tells a story. Every participant makes a difference.

CHOOSE YOUR CHALLENGE 26km Course

🏃 Run 🚶 Walk / Run 🚲 Ride Your Bike 🏍 Ride Your Motorbike 🐎 Ride Your Horse
Or Join the 🚶 5km Short Course Walk

EVENT DETAILS

Start: Newhome Farm 6172 Bindoon-Moora Road, Gillingarra

Finish: Mogumber Hub 4020 Bindoon-Moora Road, Mogumber

Motorbikes: 8.45am / Runners & Walkers: 9.00am / Cyclists: 10.00am / Horse Riders: 10.30am /
Presentations: 3.30pm / Fundraising Auction: Following presentations

HOW YOU CAN HELP ✅ Register and take part ✅ Purchase Heroes to Hub merchandise



Scan QR code for
Merchandise
Order



Scan QR code for
Event Registration
on Donation



One Powerful Purpose. Heroees to Hub 2026. Every Step Tells a Story.

Place of wheat and wattle...

Position Vacant



WE'RE LOOKING FOR

A GENERAL HAND

FULL TIME

- 9 day fortnight
- 4 weeks Annual Leave
- 10 days Personal Leave
- Extra 2 days Public Holidays
- Subsidised shared accommodation available

COMMENCING: ASAP

**FOR
FURTHER
INFO
CONTACT**



MARC BENNETT
0407 253 797
MWS@DALWALLINU.WA.GOV.AU



Place of wheat and wattle...

H5 Bird Flu in Western Australia in 2026

AVOID

Stay a safe distance away from the animal and do not touch



RECORD

Take a photo or video and record the date time and location



REPORT

Phone the emergency Animal Disease Hotline on 1800 675 888



★ FIGHT *the* BITE ★

1

THERE IS JUST
WAY TO PROTECT
YOURSELF AND
YOUR FAMILY:

**AVOID BEING
BITTEN**



www.healthywa.wa.gov.au / **FIGHTTHEBITE**



Government of Western Australia
Department of Health

DDC Youth Lounge - Ages 12+

Have you checked out the Youth Lounge recently?

Need a spot to relax, have fun, and hang out? We've got everything covered - from great reads and awesome games to table tennis matches, air hockey clashes, pool tournaments and even a VR headset.

Whether you're in the mood to chill, compete, or just catch up with friends, this is your space to unwind and enjoy. Good times, great company, and plenty to do! Drop in today!

Open - School Term Hours

Monday to Friday 3.00pm to 4.45pm

Open School Holiday Hours

Monday to Tuesday 9.00am - 3.45pm,
Wednesday to Friday 9.00am to 4.45pm



School Holiday Activities

SCHOOL HOLIDAY TIME AT THE
DDC YOUTH LOUNGE!
AGE 12+

BOOKS
POOL TABLE
AIR HOCKEY
TABLE TENNIS
BOARD GAMES
VR HEADSET

OUR YOUTH LOUNGE IS NOW OPEN FOR THE JULY SCHOOL HOLIDAYS!
COME ON DOWN AND ENJOY A SAFE PLACE TO RELAX, HANG OUT, MEET NEW PEOPLE AND SOCIALISE!
CALL IN TODAY! — WE'D LOVE TO SEE YOU.

OPEN HOURS:
MON, TUES - 9.00AM TO 3.45PM
WED, THURS, FRI - 9.00AM TO 4.45PM
DALWALLINU DISCOVERY CENTRE - JOHNSTON STREET



Author of the Month - Anh Do



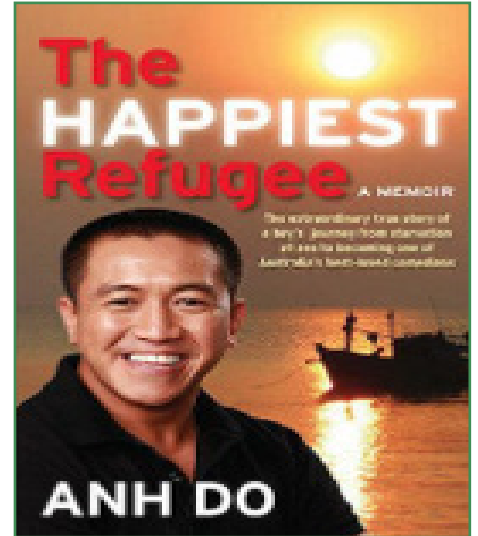
Anh Do - is an Australian author, actor, comedian, and painter.

He is a highly successful author. Beyond his bestselling adult memoir *The Happiest Refugee*

He frequently writes and illustrates popular children's book series, including *WeirDo* and *Hotdog*.

He regularly tours across Australia with his acclaimed inspirational live stage show, *The Happiest Refugee Live*, which brings his incredible life story to the theatre.

Want to branch out with your reading? Check out the featured books next page —one of them might catch your eye.



The featured books could be just the thing to help you explore a new genre and discover your next read.

Kindy visit to the Library



Dalwallinu Library welcomed

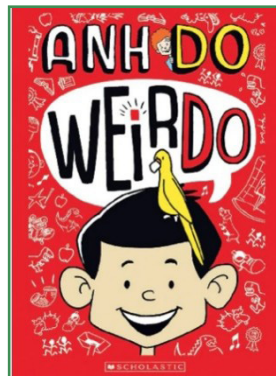
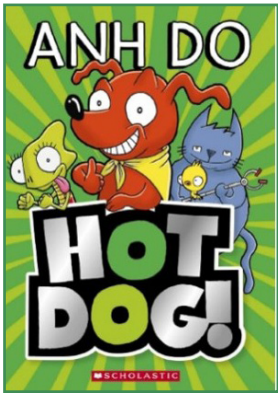
Mrs Dawson and her Kindy class for 2026!

The children enjoyed discovering new books, learning how the library works, and exploring all the wonderful things you can do.

We look forward to seeing you all again soon.



Author of the Month



Photos below of the Kindy Kids visiting the Dalwallinu Library have been provided to us from Dalwallinu District High School with permission to print them.



Library on Wheels

Every fortnight, the Dalwallinu library hits the road to deliver library books to people who are unable to attend the library in person.

The service operates every second Thursday and can go to the hospital, Acacia House and private homes in Dalwallinu for a collection of avid readers who have eclectic tastes ranging from thrillers, romance and family sagas to history, biographies and stories about animals.

The books are available in formats from large print to audio books and normal print. It keeps us on our toes trying to find new materials for people who consume books in the way other people consume food and is the highlight of Gillian's work when she succeeds.

New patrons to the service are most welcome, so if you or someone you know would like to join the library on wheels contact the library on 96611805 or ao1@dalwallinu.wa.gov.au

School Holiday Program - Ages 8+



SPORT

Join us at the Rec Centre this **July School Holidays!** We're opening the doors again and everyone is welcome! Bring your friends, create a team, and make the most of our indoor facilities and recreational spaces. It's the perfect chance to get active, meet new people, and enjoy a fun, safe, and welcoming environment. Light refreshments will be provided.

Tuesday 7th & Tuesday 14th July

Ages 8+

10.00AM - 2.00PM

Dalwallinu Rec Centre

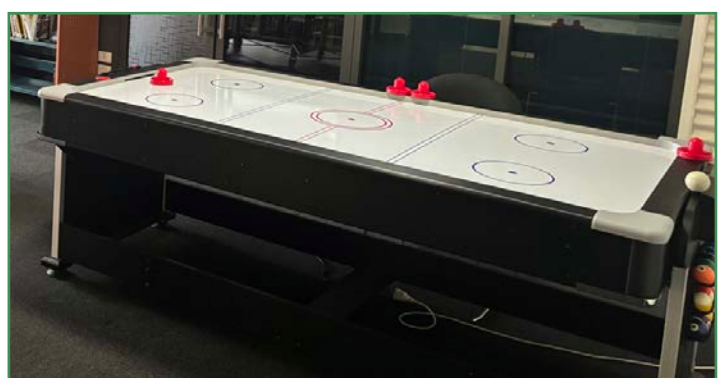


Explore Your Local Discovery Centre

The Dalwallinu Discovery Centre is your gateway to discovering everything the region has to offer.

Whether you're visiting for the first time or exploring your own backyard, you'll find helpful information, local tips, and friendly advice to make the most of your experience. The Dalwallinu Discovery Centre is here to help your plan, explore and enjoy.

Open daily Monday to Friday. Extended opening hours during Wildflower season with the centre open Saturday and Sunday. We welcome all visitors to the Discovery Centre.



eRates Registration

Things to be aware of before applying:

- If you are not the Owner or Agent for the Property, you are not eligible to register.
- There can only be ONE email address for each notice.
- If there is more than one owner of the property and other owner/s apply to receive an electronic notice, the eRates system will by default send the notice to the last registered email address.
- Once the registration is processed by the rates officer, you will receive a confirmation email.



Sign up | eRates

NOW

**Register before
30 June to receive
2026/2027 rates in
your inbox.**



Benefits of eRates

- Quicker way to receive your annual rates notices (final notices and instalments are not available via eRates)
- Ease while travelling for a long time, on holiday or living overseas.
- You still get your notice if you have moved and forgot to update your postal address.

Library News

Cold winter nights? Nothing on TV?

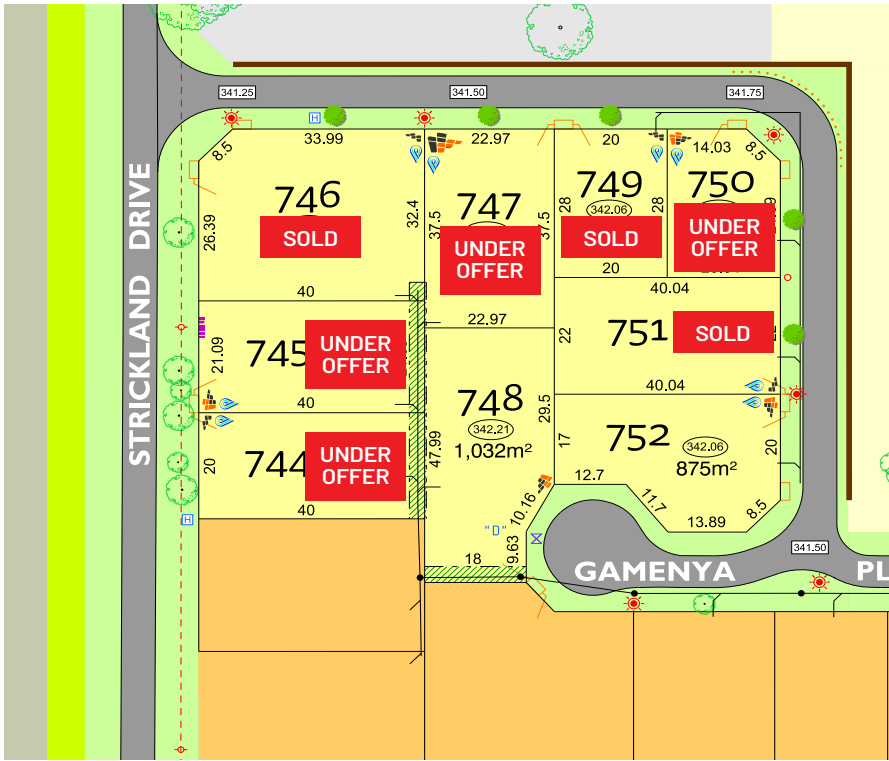
Your book's putting you to sleep? Sounds like it's time for a JIGSAW PUZZLE.

Fun, relaxing, and just challenging enough to keep you hooked.

The Library has a variety of puzzles waiting for you to take home.

Perfect for cozy winter nights. Just watch out... Puzzles are addictive!

Residential Land For Sale



- Lot sizes range from 543sqm to 1,277sqm
- Fully serviced lots with power, water, sewer, and NBN conduit supplied to each lot boundary
- Lots titled and ready for development
- To continue the development of a vibrant rural community, purchasers are required to build within 36 months from settlement.

LAND FOR SALE

LOT	ADDRESS	LOT AREA SQM	PRICE INC GST
744	Strickland Drive	800sqm	Under Offer
745	Strickland Drive	842sqm	Under Offer
747	Magenta Mews	861sqm	Under Offer
748	Gamenya Place	1,031sqm	\$139,000
750	Magenta Mews	542sqm	Under Offer
752	Gamenya Place	875sqm	\$123,400

Nutrien Harcourts WA - Brad King 0429 911 504
brad.king@nutrien.com.au

developmentwa.com.au/dalwallinu

All dimensions and areas are preliminary and subject to survey. The particulars on this brochure are supplied for identification purposes only and shall not be taken as a representation on the part of the vendor or its agents. Authorities should be consulted when services are contained within lot boundaries as building restrictions may apply.

Disclaimer: The information contained in this document is in good faith; however, neither DevelopmentWA nor any of its directors, agents or employees accept any liability as a result of a reliance upon the information, advice, statement or opinion contained in this document. This disclaimer is subject to any conditions of sale. © DevelopmentWA 2025. RDAP 0005 - 11/25.

Only 2 Lots Left

SHAPING OUR STATE'S FUTURE

DevelopmentWA

2026 Council Meeting Dates

2026 COUNCIL MEETINGS



Shire of Dalwallinu Ordinary Council Meetings will be held on the following dates and times unless otherwise advised.

DATE	DAY	TIME	PLACE
24 February 2026	Tuesday	5.00pm	Council Chambers
24 March 2026	Tuesday	5.00pm	Council Chambers
28 April 2026	Tuesday	5.00pm	Kalannie Sport & Recreation Club
26 May 2026	Tuesday	5.00pm	Council Chambers
23 June 2026	Tuesday	5.00pm	Council Chambers
28 July 2026	Tuesday	5.00pm	Council Chambers
25 August 2026	Tuesday	5.00pm	Council Chambers
22 September 2026	Tuesday	5.00pm	Council Chambers
27 October 2026	Tuesday	5.00pm	Council Chambers
24 November 2026	Tuesday	5.00pm	Council Chambers
15 December 2026	Tuesday	5.00pm	Council Chambers

Jean Knight JP
Chief Executive Officer
25/11/2025

Keep up with the news by Newsletter, Facebook or Email



Like us on Facebook or register to receive the Shire Newsletter by email.

Did you know you can receive the Shire newsletter and other relevant information by email?

To register for this service please email your details to ea@dalwallinu.wa.gov.au. You can also like us on facebook.

www.facebook.com/Shire-of-Dalwallinu.



Avon Waste 2026-2027 Recycle Calendar

July 2026						
S	M	T	W	T	F	S
			1	2	3	4
5	6	7	8	9	10	11
12	13	14	15	16	17	18
19	20	21	22	23	24	25
26	27	28	29	30	31	

August 2026						
S	M	T	W	T	F	S
						1
2	3	4	5	6	7	8
9	10	11	12	13	14	15
16	17	18	19	20	21	22
23	24	25	26	27	28	29
30	31					

September 2026						
S	M	T	W	T	F	S
		1	2	3	4	5
6	7	8	9	10	11	12
13	14	15	16	17	18	19
20	21	22	23	24	25	26
27	28	29	30			

October 2026						
S	M	T	W	T	F	S
				1	2	3
4	5	6	7	8	9	10
11	12	13	14	15	16	17
18	19	20	21	22	23	24
25	26	27	28	29	31	31

November 2026						
S	M	T	W	T	F	S
1	2	3	4	5	6	7
8	9	10	11	12	13	14
15	16	17	18	19	20	21
22	23	24	25	26	27	28
29	30					

December 2026						
S	M	T	W	T	F	S
		1	2	3	4	5
6	7	8	9	10	11	12
13	14	15	16	17	18	19
20	21	22	23	24	25	26
27	28	29	30	31		

January 2027						
S	M	T	W	T	F	S
					1	2
3	4	5	6	7	8	9
10	11	12	13	14	15	16
17	18	19	20	21	22	23
24	25	26	27	28	29	30
31						

February 2027						
S	M	T	W	T	F	S
	1	2	3	4	5	6
7	8	9	10	11	12	13
14	15	16	17	18	19	20
21	22	23	24	25	26	27
28						

March 2027						
S	M	T	W	T	F	S
	1	2	3	4	5	6
7	8	9	10	11	12	13
14	15	16	17	18	19	20
21	22	23	24	25	26	27
28	29	30	31			

April 2027						
S	M	T	W	T	F	S
				1	2	3
4	5	6	7	8	9	10
11	12	13	14	15	16	17
18	19	20	21	22	23	24
25	26	27	28	29	30	

May 2027						
S	M	T	W	T	F	S
						1
2	3	4	5	6	7	8
9	10	11	12	13	14	15
16	17	18	19	20	21	22
23	24	25	26	27	28	29
30	31					

June 2027						
S	M	T	W	T	F	S
		1	2	3	4	5
6	7	8	9	10	11	12
13	14	15	16	17	18	19
20	21	22	23	24	25	26
27	28	29	30			

- Wubin, Buntine & Kalannie**
- Dalwallinu & Pithara**



WHAT CAN GO INTO YOUR RECYCLE BIN

- Glass - All glass and ceramics, whole and broken
- Plastic - All plastic containers and plastic wraps (empty with lids off)
- Paper - All paper, junk mail and glossy magazines
- Cardboard - All cardboard products
- Aluminium & Steel - All metals, steel & aluminium excluding aerosol cans
- Liquid Paperboard - Milk, juice and laundry detergent cartons.

There will be NO changes to the service over the Christmas Period.

YOUR EMAILS WANTED

The Shire of Dalwallinu like to regularly share relevant information with the community. Follow us on facebook (Shire of Dalwallinu), visit our website (www.dalwallinu.wa.gov.au) or phone us 08 9661 0500 if you require any assistance.

If you wish to receive this newsletter electronically use the Contact Us tab on our website or email ea@dalwallinu.wa.gov.au