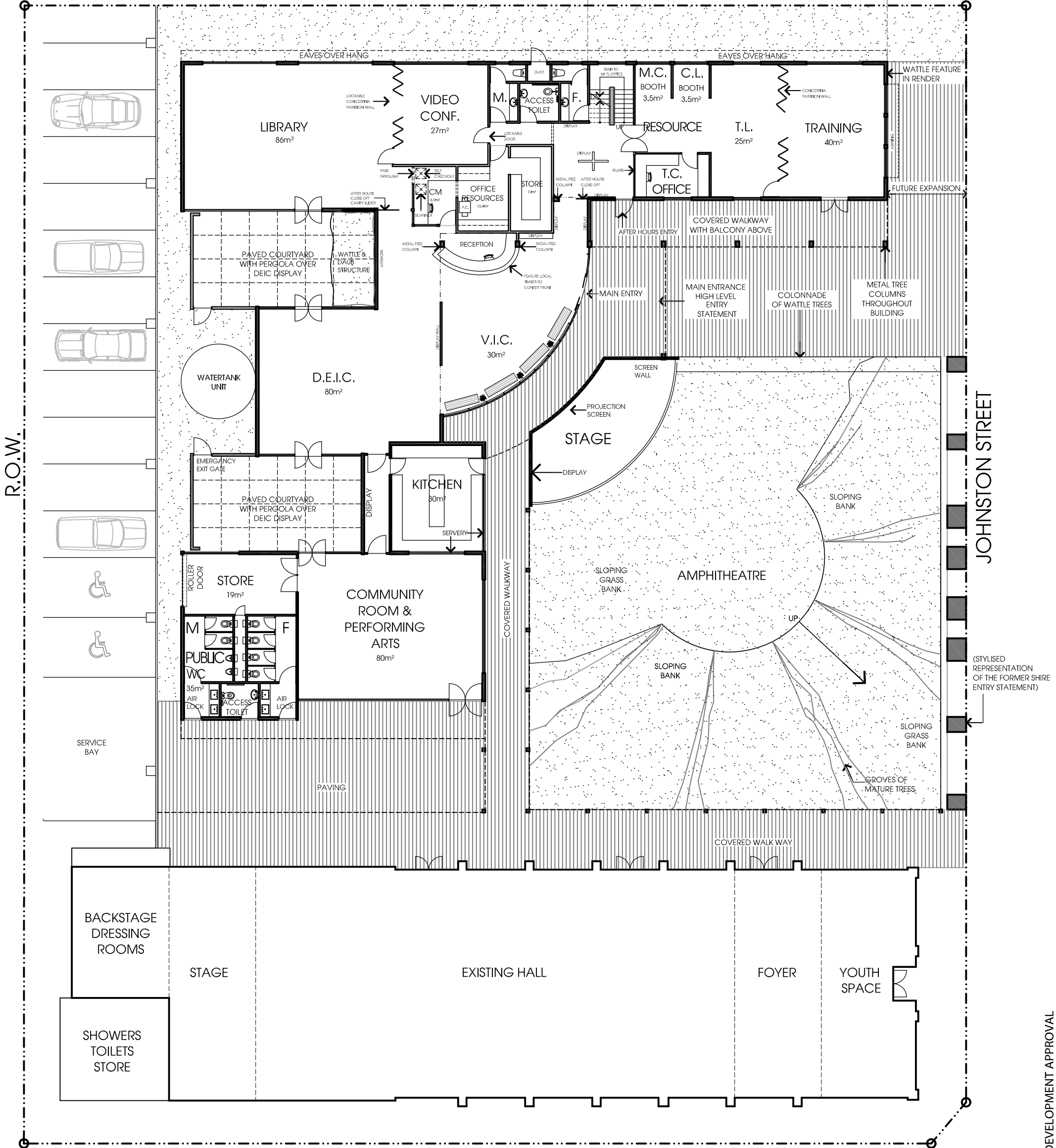
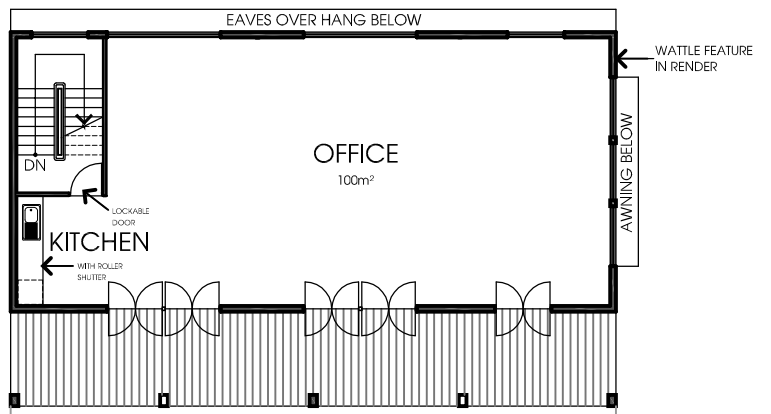


GROSS FLOOR AREAS:	
GROUND FLOOR PLAN	631m ²
FIRST FLOOR PLAN	118m ²
TOTAL	749m ²



R.O.W.

JOHNSTON STREET

(STYLISED REPRESENTATION OF THE FORMER SHIRE ENTRY STATEMENT)

DEVELOPMENT APPROVAL

DOEPEL
MARSH

architects



GROUND FLOOR PLAN-
PART PLAN



DALWALLINU SHIRE-NEW RESOURCE CENTRE
JOHNSTON ST. DALWALLINU

JOB NO. 26.21
DATE: FEB 08
DA 7.2