



Shire of Dalwallinu

ECONOMIC DEVELOPMENT & MARKETING PACKAGE 2023



TABLE OF CONTENTS

BACKGROUND	3
Who we are	3
Our businesses	3
Tourism	3
Our people	4
HOW WE SUPPORT OUR COMMUNITY	4
Aged Residents.....	4
Families	4
Disability.....	5
Lifestyle	5
Diversity	5
Liveability	5
Unique Business Attributes.....	6
Why advocate? What do we need?	6
Projects	6
CONCLUSION.....	7
RESIDENTIAL LAND DEVELOPMENT	8
Subdivision No 162915 – Lot 9002 Strickland, Dalwallinu	8
INDUSTRIAL LAND DEVELOPMENT	9
Industrial Subdivision No 162990 – Lot 99 Dalwallinu-Kalannie Rd, Dalwallinu	9
BUSINESS INVESTMENT	11
DALWALLINU 2021 ABS DATABASE	13
Dalwallinu Business Database.....	38
Emergency Service Contacts	40
Health Service Contacts	41
Community Group Contacts	42
Religious & Services Organisations Contacts	43

BACKGROUND

WHO WE ARE

The Shire of Dalwallinu is a strong, connected and thriving community, based in the Wheatbelt region of Western Australia.

Our [heart centre](#) is the town of Dalwallinu, situated 254km north-east of Perth along the Great Northern Highway. The town is a support centre to the cropping and sheep farms of the district, and home to flourishing businesses and a diverse and growing community.

Our other townships include Pithara, located 14kms south of Dalwallinu, Kalannie located 53kms east of Dalwallinu, Wubin located 21kms north of Dalwallinu and Buntine located 38 kms north of Dalwallinu. Each of these towns have their own unique value, offering business and lifestyle opportunities.

OUR BUSINESSES

The Shire of Dalwallinu has a long sheep and wheat farming heritage, with established and strong agricultural industries. Diversity of production more recently has led to canola, barley, lupins and other legumes being grown on a large-scale rotational basis. Farming enterprise support businesses including fertiliser and chemical suppliers, farm equipment businesses, and heavy machinery mechanics are present. The Liebe Group are based in the Shire, and there are IT and Computer Services available.

The town of Dalwallinu is [optimally located](#) for a range of businesses along the Great Northern Highway – which is the main transport and freight route that links the capital of Perth with its northern most port, Wyndham.

Being only 2 ½ hours away from Perth, the town is close enough to be able to access Perth, but far away enough to capitalise on the country lifestyle and its advantages, including plentiful employment, education, recreation, and sporting opportunities.

From retail and tourism, to mining, manufacturing and agricultural support industries, Dalwallinu provides all essential services for our community, and far beyond — to customers across Australia.

A strong manufacturing and transport industry is present in the Shire, including concrete product manufacture, engineering works, plastic tanks, transport companies, tyre fitters and many others.

The retail sector is thriving, with a supermarket, pharmacy, clothing and giftware shop, hotel, bakery, accommodation providers, cafe and restaurants, hairdresser, bank, vet services, accountant, fuel outlets, mechanics, tyre and auto, electrician, plumbing; and hardware. Fuel and groceries are also available in Kalannie and Wubin.

[A LIST OF ALL CURRENT BUSINESSES OPERATING IN THE SHIRE IS INCLUDED ON PAGE 36.](#)

TOURISM

The Shire is popular with tourists. The Shire is the gateway to the Western Australian wildflower country, with the town the very first on The Wildflower Way, a world-famous tourist route. Between July and October thousands of wildflower enthusiasts and nature lovers make the journey to enjoy the rare and beautiful sight of flowers carpeting the landscape and to visit our tourist attractions including the Wubin Wheatbin Museum, Cailbro School and our reserves.

The Shire is also renowned for its magnificent Wattle trees which can be seen vibrantly brightening the countryside and the town walk trails. Each September the Shire holds its famous Wattle Week celebrations to capitalise on this unique experience. A recent project to develop a wattle walk trail within Dalwallinu townsite has highlighted these beautiful natives that have more species growing within the Shire than anywhere else in the world.

Further, being centrally located on the Great Northern Highway makes the town of Dalwallinu a perfect place to stay for travellers heading south or north.

The town has a range of tourist accommodation providers that service this need, and the Shire actively promotes visitors to the region with a range of services and activities, including the Dalwallinu Discovery Centre, which houses the Visitor Information Centre and is open seven days per week during wildflower season. Other ways the Shire supports tourism includes a fully self-funded project to install an [EV charging station](#), financial assistance for community groups such as the Wubin Progress Association Wheatbin Museum and Dalwallinu Tourism Inc.

OUR PEOPLE

At the 2021 Census, the Shire of Dalwallinu had a population of 1,379. Of these, 52.2% were male and 47.8% were female. Aboriginal and Torres Strait Islander people made up 6.1% of the population. More than 32% of our population were born overseas, making us a truly multicultural Shire.

The median age of people in the Shire was 39 years. Children aged 0-14 years made up 21.9% of the population and people aged 65 years and over made up 15.4% of the population.

[DALWALLINU'S 2021 ABS CENSUS DATA IS INCLUDED ON PAGE 12.](#)

HOW WE SUPPORT OUR COMMUNITY

AGED RESIDENTS

We support our ageing population. Ageing well requires planning to enable older people to age with dignity, maintain their independence, play active and valued roles, and have their rights respected and upheld.

The Shire has an Age-Friendly Plan, which focuses on current and future needs to support our ageing population. Council is actively planning for residents to age in place through an ongoing commitment to provide medical and home support services and through the construction and maintenance of a range of aged friendly housing, from independent living units to hostel type accommodation and high needs care, using a shared care model with WA Country Health Service. The Townscape Project and an ongoing shared paths network plan has addressed issues of mobility and safety for older residents through the provision of traffic islands, multi-use footpaths and crossovers.

FAMILIES

The Shire's Strategic Community Plan is developed in consultation with community and informs all aspects of the Shire's planning in conjunction with our Corporate Business Plan, Long Term Financial Plan, Sport and Recreation Plan and other documents. All Shire Plans are available on our website.

We support our families through the provision of high class educational and health services. Dalwallinu District High School services early childhood to Year 10 as well as SIDE for Year 11 and 12 students. A brand-new playgroup and childcare centre, toy library and early childhood groups such as dance and gym are available.

Health services include a fully staffed medical centre, with a full-time general practitioner, visiting GPs and allied health services, mental health, and counselling services. The District Hospital provides emergency care, telehealth services where necessary, as well as inpatient facilities for minor illness and permanent care for high care patients. There is a recently upgraded RFDS airstrip near to town.

Recreation and sports are high priorities for Shire residents and Council have responded by planning and funding a range of resources including a wonderful Adventure Playground with barbecue and picnic areas, the ambitious Recreation Centre project, which has world class facilities including sporting facilities and a community hub for social users. The townscape project is creating community spaces for gathering in the centre of town, integrating the pioneer wall, existing park and recreation areas with a pedestrian friendly business and shopping precinct.

The Dalwallinu Discovery Centre provides locals and tourists with information, library services, Community Resource Centre services and facilities including a commercial kitchen and function room that may be hired by business and private individuals and groups. Commercial office space is available for lease within the Centre.

Dalwallinu Shire regularly hosts events and activities to bring residents and tourists into the town, including street parties, performers, Wattle Week, and youth events. The Shire supports the large number of community and

volunteer groups to grow their organisations through a program of small community grants as well as contributions towards events and support for grant writing and skills development.

DISABILITY

Council considers the needs of people with disability when planning projects, including the Recreation Centre and recreation precinct, which is fully accessible. The Shire has a Disability Access and Inclusion Plan. And all Shire buildings are accessible for people with disability and concession and companion cards are accepted at all Shire events. The Shire has built universal access housing units for disabled and low-income community members that are rented at concession rates. HACC, Disability Services Commission and NGO disability service providers support local people with disability.

[EMERGENCY CONTACTS AND HEALTH SERVICES CONTACTS ARE INCLUDED ON PAGE 38](#)

LIFESTYLE

The Dalwallinu Shire boasts a high quality of life. Our towns have plenty to offer, with the following services:

- Sport and recreation – swimming pool, world class recreation and sporting facilities in Dalwallinu and Kalannie; regular Shire led as well as privately organised community events.
- Arts and culture – a local weekly craft group, annual Agricultural Show and biannual Arts Show. Street and community art including murals, banners and sculptures throughout the Dalwallinu, Kalannie and Wubin townsites.
- Parks and municipal gardens, including Richardson Park Nature Playground, Memorial Park, Dalwallinu Skatepark, Kalannie Community Park and others.
- Supermarkets, cafes, restaurants, bakehouse, taverns.
- Active community groups.
- Schools.
- Hospital.
- Home and Community Care and Residential Care services.
- Medical centre.

And the intangible elements:

A short commute to work, easy access to the city, fresh air, open space, a strong community that looks out for each other. A focus on community led activity with an ethos of volunteering and participation. A welcoming community that encourages new residents to become involved and included in the lifestyle of the Shire. The Shire supports population growth in the Shire through the development of residential land releases for housing.

[SOON TO BE RELEASED RESIDENTIAL LAND DEVELOPMENT INFORMATION IS INCLUDED ON PAGE 8.](#)

DIVERSITY

We are an inclusive and diverse community made up of people from all around the world. Over 32% of our population are overseas born, attracted to Dalwallinu by a very successful regional repopulation project undertaken from 2011-2016. We have a range of religious organisations including Baptist, Anglican, Catholic, Uniting Church, Christian Fellowship and Exclusive Brethren.

LIVEABILITY

What makes the area so liveable?

Liveable communities make for happier, healthier residents of every age, in all life stages. A liveable community is one that is safe and secure, has affordable and appropriate housing and transportation options, and offers supportive community features and services.

Dalwallinu is a friendly and inclusive Shire that offers residents affordable accommodation, access to medical, educational and employment opportunities, sporting and recreational opportunities and the ability to age in place thanks to a forward-thinking Council. The Regional Repopulation Project has meant that the population of the Shire has increased over the past five years, critical infrastructure and services such as health and education are future

proofed and there are a range of local businesses that enable locals to purchase most goods and services they require. The thriving business sector provides employment opportunities and generates wealth for the community and individuals, enhancing the region's lifestyle.

Dalwallinu has an active and engaged community and there are many volunteer led sporting, recreation, culture health and emergency services groups that make the Shire a welcoming and inclusive place where most social needs are catered for.

[COMMUNITY GROUP CONTACTS ARE INCLUDED ON PAGE 39](#)

[RELIGIOUS AND SERVICE ORGANISATION CONTACTS ARE INCLUDED ON PAGE 40](#)

UNIQUE BUSINESS ATTRIBUTES

What makes the area so attractive to do business – why our Shire?

Businesses have the advantage of lower overheads and start-up support from Council. Council is proactive in attracting new business to the region and supporting existing business through a program of engagement opportunities to prioritise and implement identified business needs, such as staff housing and workforce support. The location of Dalwallinu along the Great Northern Highway provides opportunity to be based in a thriving town with easy access to the mining sector to the North as well as the agricultural regions to the north, west and east of the Shire.

There is an already existing thriving manufacturing industry in town, and nearby in Kalannie, and there is a stable workforce due to the repopulation project which has brought skilled migrants to the community and arrested the trend of declining populations which is occurring in other Wheatbelt communities.

[SOON TO BE RELEASED INDUSTRIAL LAND DEVELOPMENT IS INCLUDED ON PAGE 9.](#)

[SHIRE OF DALWALLINU BUSINESS INVESTMENT POLICY IS INCLUDED ON PAGE 11.](#)

WHY ADVOCATE? WHAT DO WE NEED?

The Shire of Dalwallinu is flourishing. Our population is growing each year, and we are seeing strong business outcomes from our region. A regional repopulation project has led to significant numbers of overseas born residents who largely work in the manufacturing industry. This project has assisted in the future proofing of the Shire, by increasing numbers of families attending the local school, purchasing locally, and adding to the liveability of the region through their engagement in local groups and community activities. Council was proactive in assisting overseas residents to integrate through the provision of English language classes.

We know that [a rich and diverse business community is the backbone of the local economy.](#)

We realise that businesses are the driving force behind economic activity and are committed to developing projects to assist retaining and expanding existing businesses and attracting new business.

We need to ensure that our business and community are continued to be provided for.

PROJECTS

Dalwallinu Shire Council is proactive in trying to attract and retain families, businesses, and individuals to the region. Recent projects include an ambitious [Recreation Centre and precinct upgrade](#) which has resulted in a true community hub that provides world class sporting and recreation facilities within the townsite of Dalwallinu. A new [hockey pavilion](#) is the latest project to add value to the Recreation precinct. The Shire is currently building a new [multi-purpose children's centre](#) which will include a licensed day-care, play group, and toy library as well as the capacity to provide out of school and holiday programs. Other projects include the development of [industrial](#) and [residential land](#) and the installation of an innovative [electric vehicle charging station](#) to increase the ability of visitors to come to the Shire.

The Shire Business Marketing and Attraction project undertook extensive community engagement to identify gaps in business and prioritise community needs. The three priorities identified through the engagement process have been addressed and the project has now evolved into a broad campaign to attract business through incentives such as rates holidays, marketing and promotion of the new business, site works, and discounted application fees. The Shire is developing commercial land in the light industrial area and leases Shire owned factory units to local business owners. The Townscape Focus Group has been formed to identify priorities for improving the townscape and will continue to undertake projects identified and prioritised in the Strategic Community Plan and through consultation.

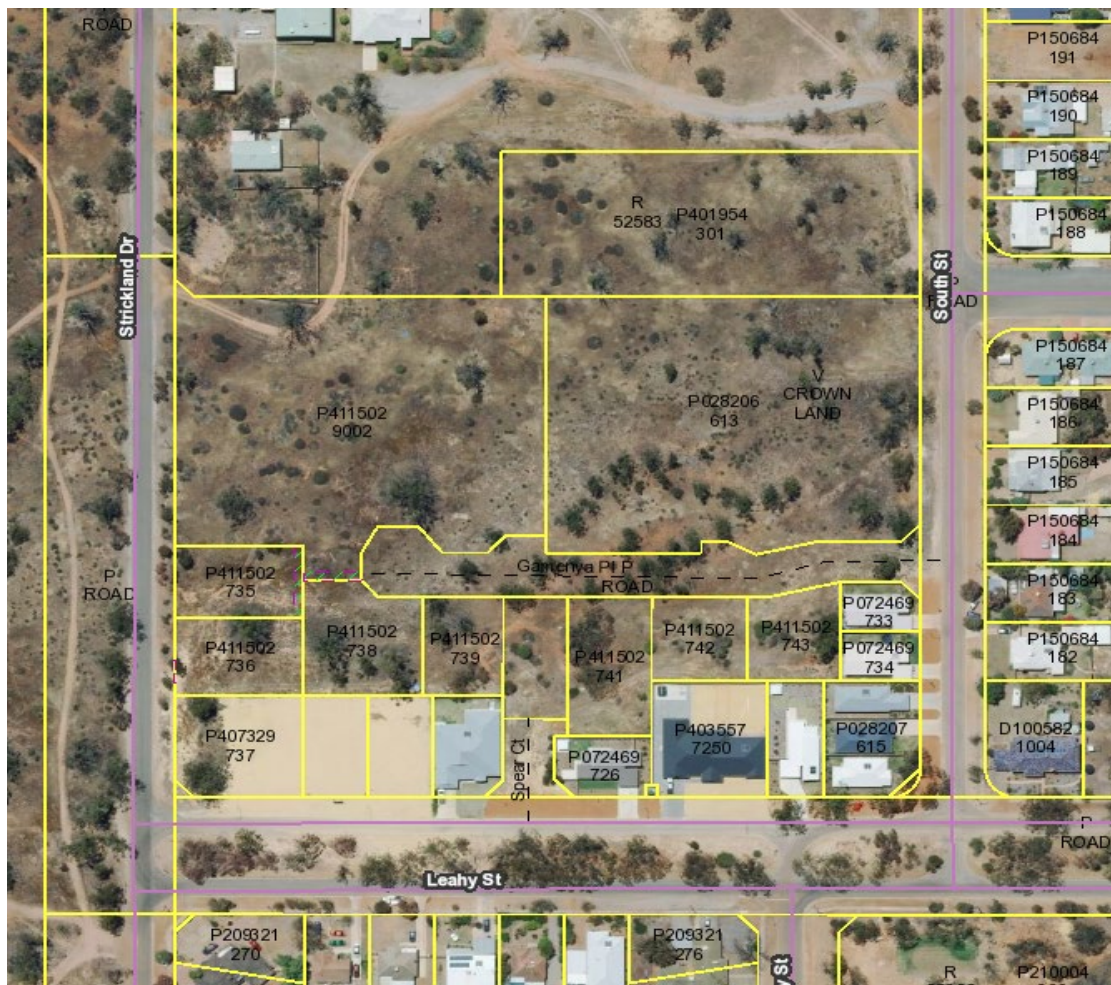
CONCLUSION

The Shire of Dalwallinu is a thriving, vibrant and welcoming place to live, work and play. Our progressive and supportive Council, our engaged and connected community members and our well established business community make Dalwallinu the ideal place for anyone thinking of a change to a more relaxed country lifestyle, and the ideal place to set up in business in a location that has everything from easy proximity to the North West and metropolitan Perth. To enquire about business or lifestyle opportunities within the Shire, email Lauren Willis our Community Development Officer on cdco@dalwallinu.wa.gov.au or call 9661 1805.

RESIDENTIAL LAND DEVELOPMENT

Subdivision No 162915 – Lot 9002 Strickland, Dalwallinu

Subject Property: Lot 9002 Strickland Drive, Dalwallinu
Land Use Zoning: Residential
Property Owner: Crown Reserve – DevelopmentWA
Proposed Development: Creation of 9 lots and 1 road reserve



The proposed subdivision will add 9 lots and a total area of 7,667m² to the Dalwallinu ‘Residential’ estate. The smallest block (Lot 4) will be 542m² whilst the largest block (Lot 7) will be 1,277m² in area. The average size will be 851m² in area.

Development on land zoned ‘Residential’ is permitted for single house and grouped dwellings. The State Planning Policy 7.3 (the R Codes) is the primary document for general development requirements.

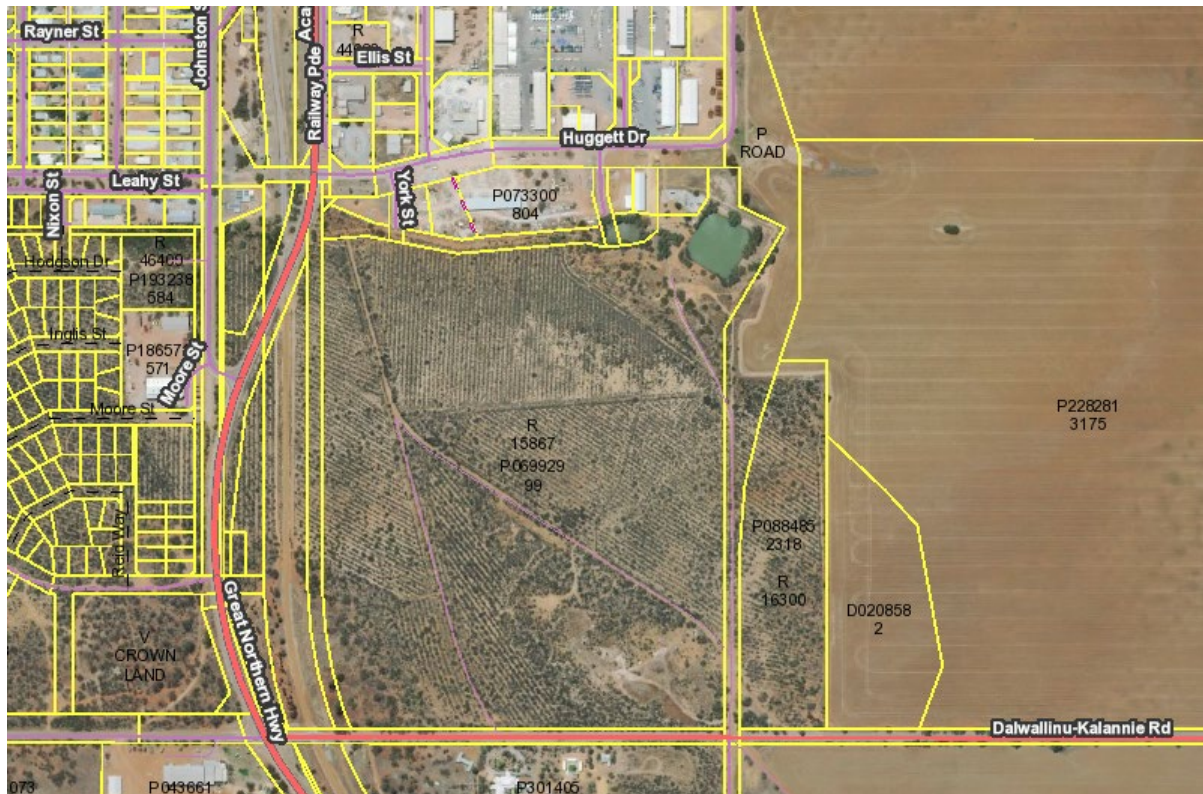
INDUSTRIAL LAND DEVELOPMENT

Industrial Subdivision No 162990 – Lot 99 Dalwallinu-Kalannie Rd, Dalwallinu

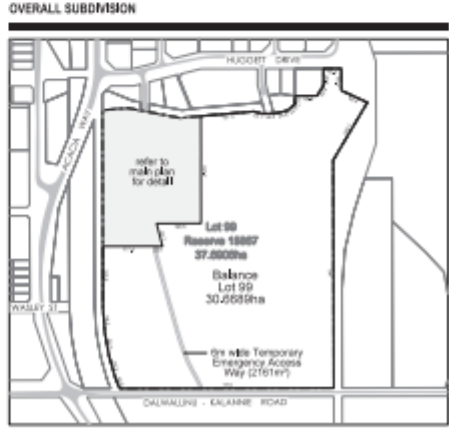
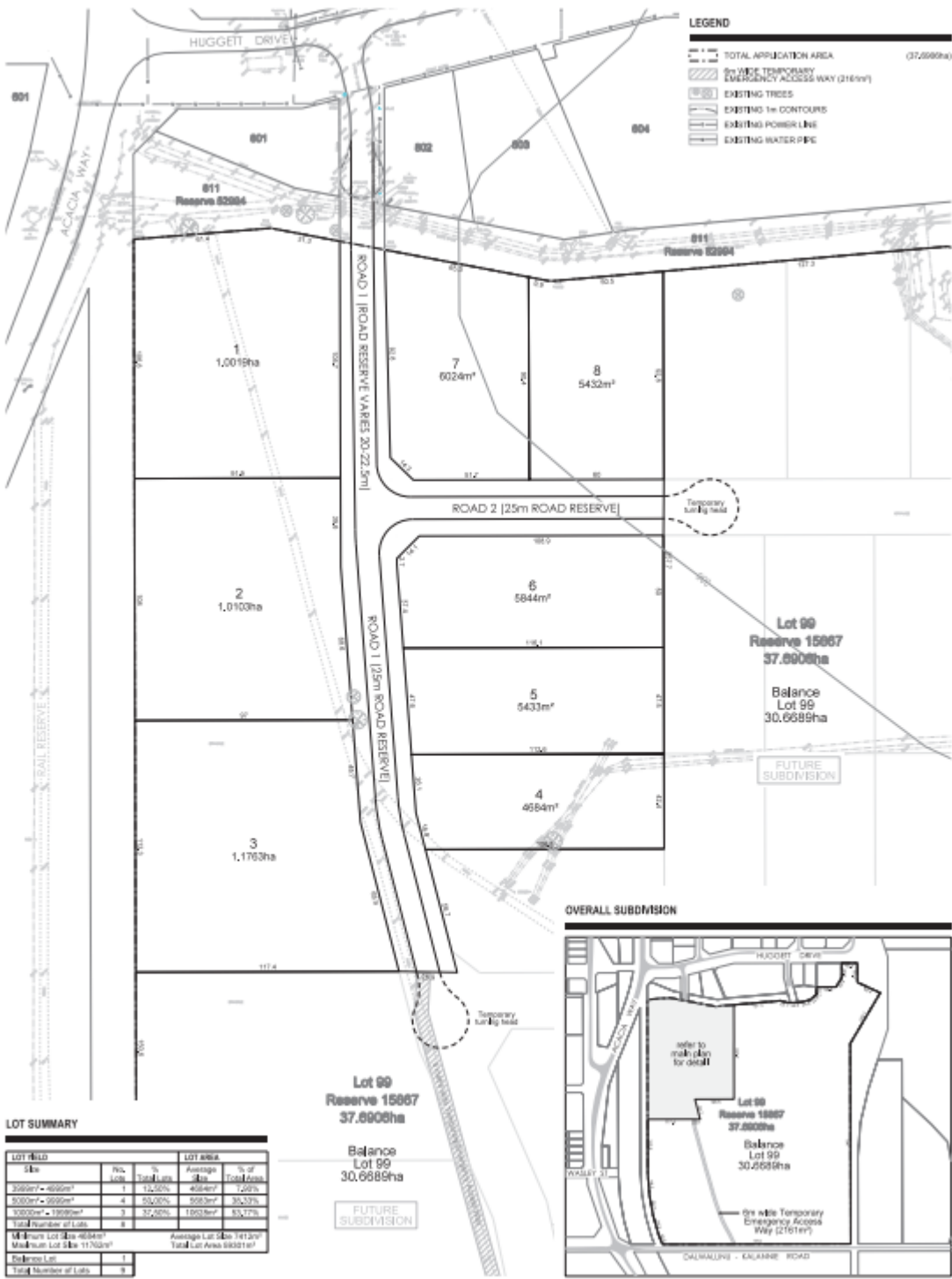
Subject Property: Lot 99 Dalwallinu-Kalannie Road, Dalwallinu (R15867)

Land Use Zoning: Industrial

Property Owner: Crown Reserve – Vested in Shire of Dalwallinu



The subdivision consists of 9 lots and a total area of 59,301m² in the General Industry estate. The smallest block (Lot 4) is 4,684m² whilst the largest block (Lot 3) is 11,763m² in area. The average size is 7412m² in area. The area is not connected to the sewerage reticulated system due to geographical constraints.



Plan of Subdivision - Freehold (Industrial)
 LOT 99 DALWALLINU - KALANNE ROAD, DALWALLINU

DRAFT

Scale: 1:1000

Taylor Burnett

Taylor Burnett Town Planning & Design
 12/13 St George's Terrace, Perth WA 6000
 95 390 4055

Prepared by: [Name]
 Checked by: [Name]
 Date: [Date]

BUSINESS INVESTMENT

Policy	<p>The Shire will support new business ventures to start up within the Shire boundaries provided it meets the below criteria.</p> <p>The business must:</p> <ul style="list-style-type: none">• Not be able to use participation in program to influence completion in the market place; and• Offer services that are in high demand.
Objective	<p>To encourage business investment in the Shire and ensure that all new business (in line with the above criteria) are supported during their start-up phase.</p>
Guidelines	<p>When businesses show interest in setting up within the Shire boundaries they approach the Shire administration staff to be part of the program.</p> <p>The business owner is assisted with their application which is put to the next Ordinary Council Meeting.</p> <p>Council is to decide whether the business will be accepted onto the program and which of the following areas they are willing to assist:</p> <ul style="list-style-type: none">• Rates Concession• Marketing and Promotional Pack• “Open Day” for the new business• Assistance with Site works• Discounted application fee.
Terms & Conditions	<ol style="list-style-type: none">1. All applicants will be assessed on a case by case basis which Council has the authority to refuse entry onto the Business Investment Program at any time.1. There is no guarantee that businesses will be granted the assistance requested on page three (3) of the application as it is at the discretion of Council at all times. See the below conditions for each requested area of assistance. <p>Rates holidays – are typically available for 36 months where the businesses pay no rates within this period. 50% of rates are paid by the business for the following twelve (12) months and full rates are paid to the Shire thereafter.</p> <p>Marketing & Promotional Pack – assistance and advice by the Economic & Community Development Officer on marketing in the local area. Cost of all marketing and promotional materials to be at the businesses cost unless otherwise informed by Council.</p> <p>Open Day – held by the business at the new business premises. The Shire of Dalwallinu will contribute to the value of contribution determined on a case by case basis, limited to a maximum of \$300.</p>

Site Works – if required Council will assist, depending on the capacity of works needed and the availability of staff at the time. An exact cost and detailed drawings of the site plan must be included in this application.

Discounted Application Fees – a discount of up to 50% of application fees will be offered to the business at Councils discretion.

If the applicant is not granted approval onto the Business Investment Program they will be advised in writing.

Application must also be coupled by a cover letter outlining the businesses details and including their corporate logo.

DALWALLINU 2021 ABS DATABASE

[Latest release](#)

2021 Census All persons

Geography type [Local Government Areas](#)

Area code LGA52520



People	1,379
Male	52.2%
Female	47.8%
Median age	39
Families	314
Average number of children per family	null
for families with children	1.9
for all households (a)	0.7
All private dwellings	610
Average number of people per household	2.6
Median weekly household income	\$1,812
Median monthly mortgage repayments	\$1,083
Median weekly rent (b)	\$230
Average number of motor vehicles per dwelling	2.3

(a) This label has been updated to more accurately reflect the Census concept shown in this data item. The data has not changed.

(b) For 2021, median weekly rent calculations exclude dwellings being occupied rent-free.

People and population

People All people	Dalwallinu	%Dalwallinu	Western Australia	%Western Australia	Australia	%Australia
Male	720	52.2	1,322,855	49.7	12,545,154	49.3
Female	660	47.8	1,337,171	50.3	12,877,635	50.7

More information on [Sex \(SEXP\)](#), [Place of usual residence \(PURP\)](#)

Table based on place of usual residence

Indigenous status All people	Dalwallinu	%Dalwallinu	Western Australia	%Western Australia	Australia	%Australia
Aboriginal and/or Torres Strait Islander	84	6.1	88,693	3.3	812,728	3.2
Non-Indigenous	1,087	78.8	2,431,204	91.4	23,375,949	91.9
Indigenous status not stated	204	14.8	140,128	5.3	1,234,112	4.9

More information on [Indigenous status \(INGP\)](#)

Table based on place of usual residence

Age All people	Dalwallinu	%Dalwallinu	Western Australia	%Western Australia	Australia	%Australia
Median age	39	N/A	38	N/A	38	N/A
0-4 years	108	7.9	161,753	6.1	1,463,817	5.8
5-9 years	95	6.9	172,654	6.5	1,586,138	6.2
10-14 years	98	7.1	171,377	6.4	1,588,051	6.2
15-19 years	46	3.3	153,263	5.8	1,457,812	5.7
20-24 years	69	5.0	158,817	6.0	1,579,539	6.2
25-29 years	81	5.9	176,045	6.6	1,771,676	7.0

30-34 years	94	6.8	196,312	7.4	1,853,085	7.3
35-39 years	106	7.7	200,904	7.6	1,838,822	7.2
40-44 years	107	7.8	178,589	6.7	1,648,843	6.5
45-49 years	85	6.2	174,632	6.6	1,635,963	6.4
50-54 years	70	5.1	173,622	6.5	1,610,944	6.3
55-59 years	113	8.2	162,778	6.1	1,541,911	6.1
60-64 years	92	6.7	150,667	5.7	1,468,097	5.8
65-69 years	77	5.6	132,186	5.0	1,298,460	5.1
70-74 years	38	2.8	115,196	4.3	1,160,768	4.6
75-79 years	37	2.7	78,012	2.9	821,920	3.2
80-84 years	23	1.7	53,115	2.0	554,598	2.2
85 years and over	36	2.6	50,106	1.9	542,342	2.1

More information on [Age \(AGEP\)](#)
Table based on place of usual residence

Registered marital status People aged 15 years and over	Dalwallinu	%Dalwallinu	Western Australia	%Western Australia	Australia	%Australia
Married	632	58.5	1,018,971	47.3	9,665,708	46.5
Separated	25	2.3	71,509	3.3	674,590	3.2
Divorced	62	5.7	190,493	8.8	1,831,952	8.8
Widowed	60	5.6	95,601	4.4	1,029,142	5.0
Never married	298	27.6	777,668	36.1	7,583,393	36.5

Note: In December 2017, amendments to the Marriage Act 1961 came into effect enabling marriage equality for all couples. For 2021, registered marriages include all couples. More information on [Registered marital status \(MSTP\)](#)
Table based on place of usual residence

Social marital status

People aged 15 years and over, usually resident and present in the household on Census night

	Dalwallinu	%Dalwallinu	Western Australia	%Western Australia	Australia	%Australia
Registered marriage (a)	469	56.8	899,167	47.4	8,747,135	46.6
De facto marriage (b)	87	10.5	230,618	12.2	2,168,351	11.5
Not married	270	32.7	766,278	40.4	7,863,327	41.9

(a) In December 2017, amendments to the Marriage Act 1961 came into effect enabling marriage equality for all couples. For 2021, registered marriages include all couples.

(b) De facto marriage is when two people live together as partners who are not in a registered marriage. It includes people who report de facto, partner, common law husband/wife/spouse, lover, girlfriend or boyfriend.

More information on [Social marital status \(MDCP\)](#)

Table based on place of usual residence

Education

Type of educational institution attending <i>People attending an educational institution</i>	Dalwallinu	%Dalwallinu	Western Australia	%Western Australia	Australia	%Australia
Preschool	23	5.1	45,452	5.6	484,185	6.3
Primary	null	null	null	null	null	null
Primary - Government	105	23.1	156,062	19.3	1,421,300	18.5
Primary - Catholic	0	0.0	36,691	4.5	396,758	5.2
Primary - other non-Government	6	1.3	29,429	3.6	254,043	3.3
Primary total (a)	111	24.4	222,555	27.6	2,075,224	27.0
Secondary	null	null	null	null	null	null
Secondary - Government	46	10.1	102,367	12.7	934,138	12.2
Secondary - Catholic	0	0.0	36,428	4.5	371,022	4.8

Secondary - other non-Government	15	3.3	36,831	4.6	322,314	4.2
<i>Secondary total (b)</i>	59	13.0	175,841	21.8	1,629,624	21.2
<i>Tertiary</i>	null	null	null	null	null	null
Tertiary - Vocational education (including TAFE and private training providers)	15	3.3	59,897	7.4	601,901	7.8
Tertiary - University or other higher education	18	4.0	112,067	13.9	1,185,450	15.4
<i>Tertiary total (c)</i>	32	7.0	172,239	21.3	1,789,994	23.3
Other	4	0.9	23,856	3.0	242,821	3.2
Not stated	223	49.1	167,197	20.7	1,456,618	19.0

- a) Includes Primary - not further defined.
b) Includes Secondary - not further defined.
c) Includes Tertiary - not further defined.

More information on [Type of educational institution attending \(TYPP\)](#)

Table based on place of usual residence

Level of highest educational attainment People aged 15 years and over	Dalwallinu	%Dalwallinu	Western Australia	%Western Australia	Australia	%Australia
Bachelor Degree level and above	135	12.5	513,667	23.8	5,464,631	26.3
Advanced Diploma and Diploma level	60	5.6	200,659	9.3	1,946,738	9.4
Certificate level IV	26	2.4	83,590	3.9	719,425	3.5
Certificate level III	124	11.5	298,459	13.9	2,617,766	12.6
Year 12	233	21.6	334,324	15.5	3,104,116	14.9
Year 11	61	5.6	107,799	5.0	958,803	4.6
Year 10	164	15.2	242,762	11.3	2,086,306	10.0
Certificate level II	0	0.0	1,044	0.0	13,687	0.1

Certificate level I	0	0.0	253	0.0	2,614	0.0
Year 9 or below	67	6.2	116,570	5.4	1,490,444	7.2
Inadequately described	19	1.8	54,719	2.5	506,259	2.4
No educational attainment	0	0.0	12,723	0.6	175,844	0.8
Not stated	192	17.8	187,134	8.7	1,694,773	8.2

More information on [Level of highest educational attainment \(HEAP\)](#)

Table based on place of usual residence

Cultural diversity

Ancestry, top responses <i>All people</i>	Dalwallinu	%Dalwallinu	Western Australia	%Western Australia	Australia	%Australia
English	533	38.7	1,000,796	37.6	8,385,928	33.0
Australian	495	35.9	789,282	29.7	7,596,753	29.9
Scottish	130	9.4	232,541	8.7	2,176,777	8.6
Filipino	99	7.2	46,785	1.8	408,842	1.6
Australian Aboriginal	80	5.8	81,117	3.0	741,307	2.9

Note 1: Respondents had the option of reporting up to two ancestries on their Census form, and this is captured by the Ancestry multi response (ANCP) variable used in this table. Therefore, the sum of all ancestry responses for an area will not equal the total number of people in the area.

Note 2: Calculated percentages represent a proportion of the number of people in the area (including those who did not state an ancestry). In 2016 QuickStats percentages were based on total number of responses and will not be comparable to this table.

More information on [Ancestry multi response \(ANCP\)](#)

Table based on place of usual residence

Country of birth, top responses All people	Dalwallinu	%Dalwallinu	Western Australia	%Western Australia	Australia	%Australia
Australia	926	67.2	1,648,794	62.0	17,019,815	66.9
<i>Other top responses:</i>	null	null	null	null	null	null
Philippines	107	7.8	37,524	1.4	293,892	1.2
England	45	3.3	196,885	7.4	927,490	3.6
New Zealand	34	2.5	75,591	2.8	530,492	2.1
South Africa	17	1.2	44,889	1.7	189,207	0.7
Germany	6	0.4	11,366	0.4	101,255	0.4

More information on [Country of birth of person \(BPLP\)](#)

Table based on place of usual residence

Country of birth of parents All people	Dalwallinu	%Dalwallinu	Western Australia	%Western Australia	Australia	%Australia
Both parents born overseas	270	19.5	1,106,195	41.6	9,321,603	36.7
Father only born overseas	82	5.9	207,167	7.8	1,670,476	6.6
Mother only born overseas	88	6.4	165,635	6.2	1,257,942	4.9
Both parents born in Australia	739	53.4	1,008,229	37.9	11,663,577	45.9
Not stated	204	14.8	172,800	6.5	1,509,188	5.9

Note: For the 2021 Census, guidance was provided to respondents on how to answer for mother/father if their birth parent is unknown or they have same-sex parents.

More information on [Country of birth of parents \(BPPP\)](#)

Table based on place of usual residence

Country of birth of father, top stated responses <i>All people</i>	Dalwallinu	%Dalwallinu	Western Australia	%Western Australia	Australia	%Australia
Australia	822	59.6	1,177,291	44.3	12,959,282	51.0
Philippines	111	8.0	42,204	1.6	350,264	1.4
England	87	6.3	323,400	12.2	1,626,778	6.4
New Zealand	51	3.7	101,529	3.8	673,661	2.6
South Africa	15	1.1	52,810	2.0	229,259	0.9

Note: For the 2021 Census, guidance was provided to respondents on how to answer for father if their birth parent is unknown or they have same-sex parents.

More information on [Country of birth of father \(BPMP\)](#)

Table based on place of usual residence

Country of birth of mother, top stated responses <i>All people</i>	Dalwallinu	%Dalwallinu	Western Australia	%Western Australia	Australia	%Australia
Australia	821	59.5	1,220,120	45.9	13,383,605	52.6
Philippines	117	8.5	48,920	1.8	417,285	1.6
England	87	6.3	306,911	11.5	1,488,479	5.9
New Zealand	62	4.5	95,298	3.6	650,743	2.6
South Africa	10	0.7	54,397	2.0	231,248	0.9

Note: For the 2021 Census, guidance was provided to respondents on how to answer for mother if their birth parent is unknown or they have same-sex parents.

More information on [Country of birth of mother \(BFPF\)](#)

Table based on place of usual residence

Religious affiliation, top responses All people	Dalwallinu	%Dalwallinu	Western Australia	%Western Australia	Australia	%Australia
No Religion, so described	498	36.1	1,130,094	42.5	9,767,448	38.4
Not stated	231	16.8	200,210	7.5	1,751,052	6.9
Catholic	171	12.4	496,847	18.7	5,075,907	20.0
Anglican	165	12.0	269,583	10.1	2,496,273	9.8
Brethren	104	7.5	1,839	0.1	18,258	0.1

Note: 'No Religion, so described' does not include those who reported Secular and Other Spiritual Beliefs such as Atheism, Agnosticism and Own Spiritual Beliefs.

In Dalwallinu, Christianity was the largest broad group religious group reported overall (55.1%) (excludes Not stated). The broad group level is the highest and most general level of the [Australian Standard Classification of Religious Groups, 2016](#).

More information on [Religious affiliation \(RELP\)](#) Table based on place of usual residence

Language used at home, top responses (other than English) All people	Dalwallinu	%Dalwallinu	Western Australia	%Western Australia	Australia	%Australia
Tagalog	52	3.8	17,313	0.7	131,195	0.5
Filipino	30	2.2	12,501	0.5	90,853	0.4
Afrikaans	10	0.7	14,729	0.6	49,375	0.2
Spanish	7	0.5	12,958	0.5	171,370	0.7
French	6	0.4	9,751	0.4	70,740	0.3
null	null	null	null	null	null	null
English only used at home	1,036	75.1	2,002,771	75.3	18,303,662	72.0
null	null	null	null	null	null	null
Households where a non-English language is used	53	12.3	204,514	21.2	2,295,688	24.8

More information on [Language used at home \(LANP\)](#) Languages used at home data is based on place of usual residence

Households where a non-English language is used is based on place of enumeration

Income and work

Participation in the labour force People aged 15 years and over	Dalwallinu	%Dalwallinu	Western Australia	%Western Australia	Australia	%Australia
In the labour force	681	63.0	1,376,251	63.9	12,695,853	61.1
Not in the labour force	218	20.2	641,842	29.8	6,888,081	33.1
Not stated	175	16.2	136,153	6.3	1,200,851	5.8

Note 1: Calculated percentages represent a proportion of people aged 15 and over in the area.

Note 2: The ABS Labour Force Survey provides the official estimates of Australia's labour force. More information is provided in [Comparing 2021 Census and Labour Force Survey](#).

More information on [Labour force status \(LFSP\)](#)

Table based on place of usual residence

Employment status People who reported being in the labour force, aged 15 years and over	Dalwallinu	%Dalwallinu	Western Australia	%Western Australia	Australia	%Australia
Worked full-time	470	69.0	786,345	57.1	7,095,103	55.9
Worked part-time	171	25.1	439,984	32.0	3,962,550	31.2
Away from work (a)	30	4.4	79,916	5.8	991,758	7.8
Unemployed	13	1.9	70,001	5.1	646,442	5.1

Note 1: Calculated percentages represent a proportion of people aged 15 and over who reported being in the labour force in the area.

Note 2: The ABS Labour Force Survey provides the official estimates of Australia's labour force. More information is provided in [Comparing 2021 Census and Labour Force Survey](#).

(a) Counts employed people who reported 0 hours of work the week before the Census or did not state their hours of work.

More information on [Labour force status \(LFSP\)](#) Table based on place of usual residence

Employment, hours worked <i>Employed people aged 15 years and over</i>	Dalwallinu	%Dalwallinu	Western Australia	%Western Australia	Australia	%Australia
0 hours (away from work)	16	2.4	58,597	4.5	787,382	6.5
1-19 hours	83	12.4	189,147	14.5	1,681,120	14.0
20-29 hours	45	6.7	152,870	11.7	1,373,403	11.4
30-34 hours	40	6.0	97,968	7.5	908,031	7.5
35-39 hours	55	8.2	235,122	18.0	2,487,056	20.6
40-44 hours	118	17.6	255,631	19.6	2,448,402	20.3
45 hours or more	299	44.6	295,596	22.6	2,159,645	17.9

Note: Records the number of hours worked in all jobs held during the week before Census Night for employed people aged 15 years and over. This excludes any time off but includes any overtime or extra time worked.

More information on [Hours worked \(HRSP\)](#) Table based on place of usual residence

Occupation, top responses <i>Employed people aged 15 years and over</i>	Dalwallinu	%Dalwallinu	Western Australia	%Western Australia	Australia	%Australia
Managers	239	35.6	160,687	12.3	1,645,769	13.7
Technicians and Trades Workers	80	11.9	199,379	15.3	1,554,313	12.9
Professionals	79	11.8	287,009	22.0	2,886,921	24.0
Clerical and Administrative Workers	75	11.2	157,610	12.1	1,525,311	12.7
Machinery Operators and Drivers	63	9.4	100,392	7.7	755,863	6.3
Labourers	63	9.4	122,961	9.4	1,086,120	9.0
Sales Workers	33	4.9	101,670	7.8	986,433	8.2
Community and Personal Service Workers	31	4.6	154,341	11.8	1,382,205	11.5

More information on [Occupation \(OCCP\)](#) Table based on place of usual residence

Industry of employment, top responses <i>Employed people aged 15 years and over</i>	Dalwallinu	%Dalwallinu	Western Australia	%Western Australia	Australia	%Australia
Other Grain Growing	142	21.2	4,008	0.3	18,945	0.2
Grain-Sheep or Grain-Beef Cattle Farming	69	10.3	4,362	0.3	18,276	0.2
Local Government Administration	26	3.9	17,696	1.4	156,402	1.3
Hospitals (except Psychiatric Hospitals)	25	3.7	54,823	4.2	545,158	4.5
Secondary Education	23	3.4	23,801	1.8	205,360	1.7

More information on [Industry of employment \(INDP\)](#) Table based on place of usual residence

Median weekly incomes (a) <i>People aged 15 years and over</i>	Dalwallinu	%Dalwallinu	Western Australia	%Western Australia	Australia	%Australia
Personal (b)	\$1,015	N/A	\$848	N/A	\$805	N/A
Family (c)	\$2,198	N/A	\$2,214	N/A	\$2,120	N/A
Household (d)	\$1,812	N/A	\$1,815	N/A	\$1,746	N/A

(a) Incomes are collected in ranges. The medians are then calculated using information from the Survey of Income and Housing.

(b) Excludes people aged 15 years and over who did not state their income.

(c) Excludes families where at least one family member aged 15 years and over did not state their income.

(d) Excludes households where at least one household member aged 15 years and over did not state their income.

More information on [Total personal income \(INCP\)](#), [Total family income \(FINF\)](#), [Total household income \(HIND\)](#)

Personal income data is based on place of usual residence

Family and household income data is based on place of enumeration

Method of travel to work on the day of the Census, top responses <i>Employed people aged 15 years and over</i>	Dalwallinu	%Dalwallinu	Western Australia	%Western Australia	Australia	%Australia
Car, as driver	419	62.4	810,960	62.1	6,347,498	52.7
Walked only	72	10.7	28,115	2.2	306,045	2.5
Car, as passenger	29	4.3	60,341	4.6	466,904	3.9
Truck	8	1.2	7,717	0.6	76,657	0.6
Bicycle	7	1.0	8,746	0.7	79,089	0.7
null	null	null	null	null	null	null
Did not go to work	46	6.9	152,794	11.7	1,417,449	11.8
Worked at home	72	10.7	98,289	7.5	2,531,262	21.0
null	null	null	null	null	null	null
(a) People who travelled to work by public transport	6	0.9	96,779	7.4	554,711	4.6
(b) People who travelled to work by car as driver or passenger	460	68.6	898,942	68.8	6,961,762	57.8

Note: Respondents had the option to report up to three methods of travel to work on the day of the Census.

(a) Includes people who used public transport (train, bus, ferry, tram/light rail), as at least one of their methods of travel to work on Census day.

(b) Includes people who travelled by car (as a driver, or as a passenger), as at least one of their methods of travel to work on Census day.

More information on [Method of travel to work \(MTWP\)](#)

Table based on place of usual residence

Unpaid work and care

Unpaid work and care People aged 15 years and over	Dalwallinu	%Dalwallinu	Western Australia	%Western Australia	Australia	%Australia
Did unpaid domestic work (week before Census Night)	658	61.0	1,463,667	67.9	14,077,657	67.7
Provided unpaid care for child/children (during two weeks before Census Night)	298	27.6	614,554	28.5	5,471,756	26.3
Provided unpaid assistance to a person with a disability, health condition or due to old age (during two weeks before Census Night)	122	11.3	231,378	10.7	2,476,681	11.9
Did voluntary work through an organisation or group (last 12 months)	350	32.3	343,566	15.9	2,933,646	14.1

More information on [Unpaid domestic work \(DOMP\)](#), [Unpaid child care \(CHCAREP\)](#), [Unpaid assistance to a person with a disability, health condition, or due to old age \(UNCAREP\)](#), [Voluntary work for an organisation or group \(VOLWP\)](#)

Table based on place of usual residence

Unpaid domestic work, number of hours People aged 15 years and over	Dalwallinu	%Dalwallinu	Western Australia	%Western Australia	Australia	%Australia
Less than 5 hours	203	18.9	447,351	20.8	4,117,135	19.8
5 to 14 hours	242	22.5	583,533	27.1	5,663,904	27.3
15 to 29 hours	96	8.9	245,381	11.4	2,511,024	12.1
30 hours or more	113	10.5	187,413	8.7	1,785,591	8.6

Note: Measures the time spent during the week before the Census doing domestic work without pay for themselves and their household.

More information on [Unpaid domestic work: number of hours \(DOMP\)](#)

Table based on place of usual residence

Health

Type of long-term health condition <i>All people</i>	Dalwallinu	%Dalwallinu	Western Australia	%Western Australia	Australia	%Australia
Arthritis	76	5.5	202,847	7.6	2,150,396	8.5
Asthma	97	7.0	195,300	7.3	2,068,020	8.1
Cancer (including remission)	36	2.6	72,864	2.7	732,152	2.9
Dementia (including Alzheimer's)	0	0.0	17,612	0.7	189,162	0.7
Diabetes (excluding gestational diabetes)	60	4.4	117,182	4.4	1,198,721	4.7
Heart disease (including heart attack or angina)	37	2.7	94,523	3.6	999,096	3.9
Kidney disease	10	0.7	20,352	0.8	231,777	0.9
Lung condition (including COPD or emphysema)	19	1.4	42,087	1.6	441,109	1.7
Mental health condition (including depression or anxiety)	82	5.9	220,581	8.3	2,231,543	8.8
Stroke	11	0.8	21,573	0.8	234,609	0.9
Any other long-term health condition(s)	75	5.4	196,431	7.4	2,041,929	8.0
No long-term health condition(s)	773	56.1	1,629,249	61.2	15,292,718	60.2
Not stated	258	18.7	235,428	8.9	2,066,251	8.1

Note 1: Respondents had the option of reporting multiple long-term health conditions. Therefore, the sum of all long-term health condition responses for an area will not equal the total number of people in the area.

Note 2: Calculated percentages represent a proportion of the number of people in the area (including those who did not answer the long-term health conditions question).

More information on [Type of long-term health condition \(LTHP\)](#)

Table based on place of usual residence

Count of selected long-term health conditions All people	Dalwallinu	%Dalwallinu	Western Australia	%Western Australia	Australia	%Australia
None of the selected conditions	809	58.7	1,730,753	65.1	16,302,537	64.1
One condition	224	16.2	483,681	18.2	4,791,516	18.8
Two conditions	61	4.4	142,068	5.3	1,490,344	5.9
Three or more conditions	19	1.4	68,082	2.6	772,142	3.0
Not stated	258	18.7	235,428	8.9	2,066,251	8.1

Note: Selected long-term health conditions include arthritis, asthma, cancer (including remission), dementia (including Alzheimer's), diabetes (excluding gestational diabetes), heart disease (including heart attack or angina), kidney disease, lung condition (including COPD or emphysema), mental health condition (including depression or anxiety) and stroke. Other long-term health conditions are not included in this count.

More information on [Count of selected long-term health conditions \(CLTHP\)](#)

Table based on place of usual residence

Australian Defence Force service

Australian Defence Force Service People aged 15 years and over	Dalwallinu	%Dalwallinu	Western Australia	%Western Australia	Australia	%Australia
Currently serving	0	0.0	6,905	0.3	84,865	0.4
Previously served (and not currently serving)	18	1.7	55,507	2.6	496,276	2.4
Has never served	880	81.4	1,948,313	90.4	18,954,152	91.2
Not stated	179	16.6	143,513	6.7	1,249,493	6.0

Note: Australian Defence Force Service includes service in the Regular and/or Reserves service. Includes Royal Australian Navy, Australian Army, Royal Australian Air Force, Second Australian Imperial Force, National Service and NORFORCE. Excludes service for non-Australian defence forces.

More information on [Australian Defence Force service \(ADFP\)](#)

Table based on place of usual residence

Families

Family composition <i>All families</i>	Dalwallinu	%Dalwallinu	Western Australia	%Western Australia	Australia	%Australia
Couple family without children	140	44.6	272,493	38.8	2,608,834	38.8
Couple family with children	150	47.8	313,666	44.6	2,944,140	43.7
One parent family	26	8.3	106,035	15.1	1,068,268	15.9
Other family	3	1.0	10,930	1.6	108,941	1.6

More information on [Family composition \(FMCF\)](#)

Table based on place of enumeration

Single (or lone) parents <i>Proportion of the total single (or lone) parent population</i>	Dalwallinu	%Dalwallinu	Western Australia	%Western Australia	Australia	%Australia
Male	N/A	34.6	N/A	20.1	N/A	19.6
Female	N/A	80.8	N/A	79.9	N/A	80.4

More information on [Sex of lone parent \(SLPP\)](#)

Table based on place of enumeration

Employment status of couple families

Couple families where parents or partners were aged 15 years and over

	Dalwallinu	%Dalwallinu	Western Australia	%Western Australia	Australia	%Australia
Both employed, worked full-time	72	24.7	124,472	21.2	1,234,626	22.2
Both employed, worked part-time	10	3.4	25,708	4.4	264,182	4.8
One employed full-time, one part-time	91	31.3	136,018	23.2	1,155,042	20.8
One employed full-time, other not working	45	15.5	78,931	13.5	692,497	12.5
One employed part-time, other not working	13	4.5	33,022	5.6	339,960	6.1
Both not working	26	8.9	102,945	17.6	1,163,744	21.0
Other	9	3.1	36,730	6.3	449,640	8.1
Labour force status not stated	24	8.2	48,325	8.2	253,286	4.6

Note: The ABS Labour Force Survey provides the official estimates of Australia's labour force. More information is provided in [Comparing 2021 Census and Labour Force Survey](#).

More information on [Labour force status of parents/partners in families \(LFSF\)](#)

Table based on place of enumeration

Dwellings

Dwelling count

Private dwellings (excl. visitor only and other non-classifiable households)

	Dalwallinu	%Dalwallinu	Western Australia	%Western Australia	Australia	%Australia
Occupied private dwellings	431	83.5	964,734	89.1	9,275,217	89.9
Unoccupied private dwellings	87	16.9	118,109	10.9	1,043,776	10.1

More information on [Dwelling type \(DWTD\)](#)

Table based on place of enumeration

Dwelling structure <i>Occupied private dwellings (excl. visitor only and other non-classifiable households)</i>	Dalwallinu	%Dalwallinu	Western Australia	%Western Australia	Australia	%Australia
Separate house	397	92.1	769,038	79.7	6,710,582	72.3
Semi-detached, row or terrace house, townhouse etc	11	2.6	125,450	13.0	1,168,860	12.6
Flat or apartment	0	0.0	62,360	6.5	1,319,095	14.2
Other dwelling	16	3.7	5,858	0.6	54,711	0.6

More information on [Dwelling structure \(STRD\)](#)

Table based on place of enumeration

Number of bedrooms <i>Occupied private dwellings (excl. visitor only and other non-classifiable households)</i>	Dalwallinu	%Dalwallinu	Western Australia	%Western Australia	Australia	%Australia
None (includes studio apartments or bedsitters)	0	0.0	2,557	0.3	44,864	0.5
1 bedroom	17	4.0	35,236	3.7	488,681	5.3
2 bedrooms	35	8.2	121,450	12.6	1,768,530	19.1
3 bedrooms	180	42.0	361,327	37.5	3,617,803	39.0
4 or more bedrooms	188	43.8	431,241	44.7	3,224,351	34.8
Number of bedrooms not stated	9	2.1	12,919	1.3	130,989	1.4
null	null	null	null	null	null	null
Average number of bedrooms per dwelling	3.5	N/A	3.3	N/A	3.1	N/A
Average number of people per household	2.6	N/A	2.5	N/A	2.5	N/A

More information on [Number of bedrooms in a private dwelling \(BEDD\)](#), [Number of persons usually resident in dwelling \(NPRD\)](#)

Table based on place of enumeration

Number of registered motor vehicles <i>Occupied private dwellings (excl. visitor only and other non-classifiable households)</i>	Dalwallinu	%Dalwallinu	Western Australia	%Western Australia	Australia	%Australia
None	7	1.6	47,107	4.9	673,969	7.3
1 motor vehicle	113	26.3	327,859	34.0	3,353,737	36.2
2 motor vehicles	176	40.9	376,783	39.1	3,366,738	36.3
3 or more vehicles	122	28.4	199,811	20.7	1,745,924	18.8
Number of motor vehicles not stated	12	2.8	13,179	1.4	134,848	1.5

Note: Motor vehicles excludes motorbikes, motor scooters and heavy motor vehicles.

More information on [Number of registered motor vehicles \(VEHD\)](#)

Table based on place of enumeration

Housing

Household composition <i>Occupied private dwellings (excl. visitor only and other non-classifiable households)</i>	Dalwallinu	%Dalwallinu	Western Australia	%Western Australia	Australia	%Australia
Family households	309	72.0	686,949	71.2	6,542,648	70.5
Single (or lone) person households	111	25.9	245,193	25.4	2,370,742	25.6
Group households	9	2.1	32,591	3.4	361,822	3.9

More information on [Household composition \(HHCD\)](#)

Table based on place of enumeration

Tenure type Occupied private dwellings (excl. visitor only and other non-classifiable households)	Dalwallinu	%Dalwallinu	Western Australia	%Western Australia	Australia	%Australia
Owned outright	191	44.3	281,327	29.2	2,872,331	31.0
Owned with a mortgage (a)	102	23.7	385,629	40.0	3,242,449	35.0
Rented (b)	102	23.7	263,826	27.3	2,842,378	30.6
Other tenure type (c)	28	6.5	20,648	2.1	181,518	2.0
Tenure type not stated	11	2.6	13,303	1.4	136,538	1.5

(a) Includes dwellings purchased under a shared equity scheme.

(b) Excludes dwellings being occupied rent-free, this is not comparable to 2016 QuickStats data.

(c) Comprises dwellings occupied rent free, occupied under a life tenure scheme and other tenure type.

More information on [Tenure type \(TEND\)](#)

Table based on place of enumeration

Household income Occupied private dwellings (excl. visitor only and other non-classifiable households)	Dalwallinu	%Dalwallinu	Western Australia	%Western Australia	Australia	%Australia
Less than \$650 total household weekly income (a)	N/A	13.0	N/A	16.3	N/A	16.5
More than \$3,000 total household weekly income (a)	N/A	22.0	N/A	25.6	N/A	24.3

(a) Percentages (%) exclude dwellings with 'Partial income stated' or 'All incomes not stated.'

More information on [Total household income \(weekly\) \(HIND\)](#)

Table based on place of enumeration

Rent weekly payments**Occupied private dwellings (excl. visitor only and other non-classifiable households) being rented****Dalwallinu %Dalwallinu****Western Australia %Western Australia****Australia %Australia**

	Dalwallinu	%Dalwallinu	Western Australia	%Western Australia	Australia	%Australia
Median rent (a)	230	N/A	340	N/A	375	N/A
null	null	null	null	null	null	null
Renter households where rent payments are less than or equal to 30% of household income (b)	66	64.7	157,934	59.9	1,667,080	58.7
Renter households with rent payments greater than 30% of household income (b)	11	10.8	74,615	28.3	915,317	32.2
Unable to determine (c)	23	22.5	31,280	11.9	259,992	9.1

(a) Median rent calculations exclude dwellings being occupied rent-free, this is not comparable to 2016 QuickStats data.

(b) This is not comparable with historical QuickStats, as applicable households included in this calculation have changed. For details on how Household income is derived please refer to [RAID](#).

(c) Unable to determine includes those households in which income and/or housing costs were not, or were only partially stated, by persons in the household.

More information on [Rent payments \(weekly\) \(RNTD\)](#), [Rent affordability indicator \(RAID\)](#)

Table based on place of enumeration

Mortgage monthly repayments Occupied private dwellings (excl. visitor only and other non-classifiable households) owned with a mortgage or purchased under a shared equity scheme	Dalwallinu	%Dalwallinu	Western Australia	%Western Australia	Australia	%Australia
Median mortgage repayments	1,083	N/A	1,842	N/A	1,863	N/A
null	null	null	null	null	null	null
Owner with mortgage households where mortgage repayments are less than or equal to 30% of household income (a)	77	75.5	277,901	72.1	2,398,902	74.0
Owner with mortgage households with mortgage repayments greater than 30% of household income (a)	6	5.9	50,192	13.0	468,817	14.5
Unable to determine (b)	19	18.6	57,539	14.9	374,734	11.6

(a) This is not comparable with historical QuickStats, as applicable households included in this calculation have changed. For details on how Household income is derived please refer to [MAID](#).

(b) Unable to determine includes those households in which income and/or housing costs were not, or were only partially stated, by persons in the household.

More information on [Mortgage repayments \(monthly\) \(MRED\)](#), [Mortgage affordability indicator \(MAID\)](#)

Table based on place of enumeration

Aboriginal and/or Torres Strait Islander peoples

People characteristics						
Aboriginal and/or Torres Strait Islander people	Dalwallinu	%Dalwallinu	Western Australia	%Western Australia	Australia	%Australia
Male	38	45.8	44,716	50.4	403,709	49.7
Female	45	54.2	43,985	49.6	409,025	50.3
null	null	null	null	null	null	null
Median age	29	N/A	24	N/A	24	N/A

More information on [Sex \(SEXP\)](#), [Indigenous status \(INGP\)](#)

Table based on place of usual residence

Dwelling characteristics						
Occupied private dwellings (excl. visitor only and other non-classifiable households) where at least one person was Aboriginal and/or Torres Strait Islander	Dalwallinu	%Dalwallinu	Western Australia	%Western Australia	Australia	%Australia
Average number of people per household	3.1	N/A	3.2	N/A	3.1	N/A
Average number of people per bedroom	1	N/A	1	N/A	1	N/A
Median weekly household income (a)	1,792	N/A	1,480	N/A	1,507	N/A

(a) Excludes households where at least one person aged 15 years and over in the household did not state their income.

More information on [Number of bedrooms in a private dwelling \(BEDD\)](#), [Household composition \(HHCD\)](#), [Total household income \(HIND\)](#), [Indigenous household indicator \(INGDWTD\)](#)

Table based on place of enumeration

Mortgage and rent

Occupied private dwellings (excl. visitor only and other non-classifiable households) where at least one person was Aboriginal and/or Torres Strait Islander

Dalwallinu %Dalwallinu Western Australia %Western Australia Australia %Australia

Median weekly rent (a)	245	N/A	260	N/A	300	N/A
Median monthly mortgage repayments	992	N/A	1,733	N/A	1,721	N/A

DALWALLINU BUSINESS DATABASE			
Business Name	Contact name	Email Address	Phone Number
Afgri	Dan Jolly	djolly@afgri.com.au	9861 1105
Air2Aqua	Neville White	nev@bigpond.com	0427 488 317
Arro Enterprises Pty Ltd/ Ceres	Andrew Peterson	arroent.ptyltd@westnet.com.au	0429 188 180
Bankwest	Elysia Monego	Elysia.Monego@bankwest.com.au	13 17 19
Boekemans	Tim Boekeman	tim@boekemans.com.au	9661 1002
BP Roadhouse Wubin	Sue Schmidt	highpriestess_bp@hotmail.com	9664 1013
Bridgestone Tyre Centre	Matt Wilson	btc dalwallinu@westnet.com.au	9661 1206
Bywaters	Neil Bywaters	neilbywaters@westnet.com.au	0428 924 008/0427 008 311
Coerco	Andrew Jackson	andrew.jackson@coerco.com.au	1800 646 277
Conquest Group	Tim Wallis	tim@conquestgroup.com.au	1800 228 685
Dallcon	Hilton Sprigg	hilton@dallcon.com	96611264
Dallcon	Rikky Sprigg	rikky@dallcon.com	9661 1264
Dally Ag Supplies	Phil Lehmann	pl2010@bigpond.com	9661 1120
Dally Café	Karen Whyte	dally.cafe@bigpond.com	9661 1133
Dalwallinu Foodworks	John Minty	johnminty66@yahoo.com.au	9661 1110
Dalwallinu Caravan Park	Keith Jones	dalwallinu.caravanpark@gmail.com	9661 1253
Dalwallinu CRC	Rebecca Faderson	coordinator@dalwallinucrc.net.au	9661 1802
Dalwallinu Traders		enquiries@dalwallinutraders.com.au	9661 1080
Dalwallinu Haulage	Shannon Dawson	shannon@dallyhaulage.com.au	9661 2221
Dalwallinu Hotel	Jason	manager@dalwallinuhotel.com.au	9661 1102
Dalwallinu Motors (PUMA)			9661 1104
Dalwallinu Pharmacy	Joseph	dalwallinupharmacy@gmail.com	9661 2795
Dalwallinu Towing	Roger Osborn	roger.osborn@remotearconcrete.com.au	0427 480 845
Dalwallinu Wheatlands Motel	Julz Dyer	dalwallinuwheatland@bigpond.com	9661 1600
Dalwallinu Windscreens	Wayne Johnson	dallyscreens@gmail.com	0401 682 587
Dilly Dally	Lee Anne Carter	carterco33@bigpond.com	9666 3017
Elders	Dave Scholz	david.scholz@elders.com.au	9661 2000
Electricair	Kevin Smith	electricair@westnet.com.au	9661 2808
Gekko	Brett Wallis	brett@gekoeng.com	0458 465 487
Gypsum Supplies Kalannie	Daniel Nixon	daniel@gypsumsupplies.com.au	0429 662 004

DALWALLINU BUSINESS DATABASE			
Hathway Farm Equipment	Stan Hathway	hfe@wn.com.au	9666 2034
Hutcity Portables Kalannie	Steve Draffin	admin@hutcity.com.au	9666 2166
Jenny's Bakehouse	Jenny Dickins	jennysbakehouse1@bigpond.com	9661 1180
JM Hair	Jessica Moore	jessicamoore90@hotmail.co.uk	0477 685 183
Kalannie Contractors	Chris	kalcont@bigpond.com	0429 662 043
Kalannie Store	Nancy	kalanniestore@bigpond.com	9666 2035
Kalannie Tree Supplies	Angela Waters	kaltrees@wn.com.au	9666 2131
Nutrien	Glen Jones	glen.jones@landmark.com	9661 1170
Liberty Plumbing	Max Calmy	mcliberty1@gmail.com	0455 186 780
Liberty Roadhouse Wubin	Malik Malla	wubinroadhouse@gmail.com	9664 1022
Liebe Group	Katrina Venticinque	admin@liebegroup.org.au	9661 0570
Mammoth Equipment	Richard Draffin	rjd@mammothequip.com.au	1300 310 340
Napier Motors Kalannie	John Napier	napiermotors@bigpond.com	0418 954 287
P&J Transport	Phil Waters	jophil3131@bigpond.com	0427 740 057
Primaries	Garry Crossman	garrycrossman@primaries.com.au	9661 2190
R&R Auto	Rhys Donnes	rhys@rnrauto.com.au	0459 772 352
Rabobank		dalwallinu@rabobank.com	9661 0900
Rowdy's Electrical	Rowdy Welbon	rowdysparky@westnet.com.au	9661 2535
Shermac	Kim Ray	kim.ray@shermac.com.au	1300 799 943
SWAT pest control	Neil Blaxell	neilswat@outlook.com	0427 641 035
Tractus	Andrew Davies	andrew@tractus.com.au	0447 786 489
The Old Convent	Kirsty Carter	admin@theoldconventdalwallinu.com.au	9661 1551
The Rest B&B	Greg & Karen McNeill	admin@therestdalwallinu.com.au	9661 1162
Wallis Computer Solutions	Nat Wallis	sales@wcswa.com.au	9661 1803
Wallis Engineering	John Wallis	rwallis@wn.com.au	9661 1209
wfi insurance	Martin Brown	martin.brown@wfi.com.au	9661 1170
Wheatbelt Vet Service	Kirsten Tunstill	info@wheatbeltvet.com.au	9661 1290
Wilgie Engineering	Paul & Melissa Sutherland	wilgiefarms@clearmail.com.au	9662 1030
Wubin Hotel	Brett Boys	dalwallinuhotel@westnet.com.au	9664 1040
Wubin Towing, Tilt Trays & Transport	Roger Osborn	roger@mmatesplace.com.au	0427 480 845
Wubin Trading	Tracy Edwards	nbroad@bigpond.com	9664 1045

EMERGENCY SERVICE CONTACTS				
<u>Group Name</u>	<u>Contact</u>	<u>Address</u>	<u>Email Address</u>	<u>Contact Number</u>
ALL EMERGENCIES				000
Dalwallinu Police Station				9661 0444
Dalwallinu St John Ambulance	Karen Christian	11 Leahy Street Dalwallinu WA 6609	sjadalwallinu@gmail.com	
Dalwallinu Volunteer Fire Brigade	Sam Dickins	12 Leahy Street Dalwallinu WA 6609	-	96611300/0427 621 039
Buntine Bush Fire Brigade	Mike Dodd			0427 642 078
Dalwallinu Bush Fire Brigade	Aaron Mills			0428 218 881
Kalannie Bush Fire Brigade	Rowan McCreery			0408 845 711
Kalannie Fire Brigade	Graham Hathway			9666 2153
Kalannie St John Ambulance	Cheryl Moore		ambulance@kalannie.com.au	9666 2120
Pithara Bush Fire Brigade	Aaron Mills			0428 218 881
Wubin Bush Fire Brigade	Gareth Barnes			0427 311 584

HEALTH SERVICE CONTACTS			
<u>NAME</u>	<u>Address</u>	<u>Availability</u>	<u>Contact Number</u>
Dalwallinu Hospital	Myers Street Dalwallinu	24/7	9661 0200
Dalwallinu Medical Centre	Myers Street Dalwallinu	Mon-Thurs 9-5	9661 1203
Cancer Support	Myers Street Dalwallinu	As required	9661 0200
Child Health	Myers Street Dalwallinu	By appointment	9661 0200
Commonwealth Home Support	Myers Street Dalwallinu	By appointment	9661 0200
Immunisation	Myers Street Dalwallinu	By appointment	9661 0200
Mental Health	Myers Street Dalwallinu	Mon-Fri	9661 0200
Occupational Therapy	Myers Street Dalwallinu	Weekly (referral needed)	9661 0270
Palliative Care	Myers Street Dalwallinu	As required	9661 0200
Physiotherapy	Myers Street Dalwallinu	Weekly (referral needed)	9661 0270
Psychologist	Myers Street Dalwallinu	Weekly (referral needed)	9661 1203
School Health	Myers Street Dalwallinu	By appointment	9661 0200
Social Worker	Myers Street Dalwallinu	As required	9661 0270
Speech Therapist	Myers Street Dalwallinu	Weekly (referral needed)	9661 0270

COMMUNITY GROUP CONTACTS				
Group Name	Contact	Address	Email Address	Contact Number
Badimia Bandi Barna Aboriginal Corp.	Bev Slater	PO Box 46 Wubin WA 6612	badimia@outlook.com	0417 022 060
Dally Scrappers & Card Makers	Karen Streets			0487 401 986
Dalwallinu & District Lions Club	Kathy Mills	Po Box 15 Dalwallinu WA 6609	nwkemills@wn.com.au	9661 1304
Dalwallinu & Districts CWA	Holly McFarlane	Po Box 14 Dalwallinu WA 6609	dalwallinucwa@gmail.com	0409 118 847
Dalwallinu & Districts Dance Group	Sarah Dawson		dalwallinudance@gmail.com	
Dalwallinu AG Society	Rebecca Wilson	PO Box 200 Dalwallinu WA 6609	dalwallinushow@hotmail.com	0427 681 202
Dalwallinu Basketball	Melissa Sutherland	C- Post Office Dalwallinu WA 6609	wilgie.farms@bigpond.com	0427 621 010
Dalwallinu Craft Group	Kathy Mills	Po Box 83 Dalwallinu WA 6609	nwkemills@wn.com.au	9661 1304
Dalwallinu Creative Arts Group	Jane Hyde	PO Box 131 Dalwallinu WA 6609	kellymutter@hotmail.com	
Dalwallinu CRC	Rebecca Faderson	Po Box 327 Dalwallinu WA 6609	manager@dalwallinucrc.net.au	9661 1802
Dalwallinu Day Care	Kelsea Pipe		Kelsea.Pipe@infocus.com.au	0400 407 833
Dalwallinu District Tourism Inc	Rebecca Faderson	PO Box 102 Dalwallinu WA 6609	manager@dalwallinucrc.net.au	9661 1802
Dalwallinu ELC REED	Kylie Helgesen	PO Box 390 Narrogin WA 6312	admin@reedwa.org.au	6832 3825
Dalwallinu Football & Hockey Club	Brian McAlpine	PO Box 23 Dalwallinu WA 6609	dallyfootballclub@gmail.com	
Dalwallinu Golf Club	Ty Herron	PO Box 100 Dalwallinu WA 6609	tyronherron@westnet.com.au	0428 851 328
Dalwallinu Mens Shed		PO Box 147 Dalwallinu WA 6609		
Dalwallinu Netball Association	Brian McAlpine	PO Box 23 Dalwallinu WA 6609	dalwallinunetball@gmail.com	
Dalwallinu P & C	Rachael Lehmann	97 Johnston Street Dalwallinu WA 6609	mark_rach@bigpond.com	0429 621 034
Dalwallinu Playgroup	Sarah Del Nero	PO Box 214 Dalwallinu WA 6609	dalwallinuplaygroup@hotmail.com	
Dalwallinu Speedway Association	Jo Filgate	PO Box 282 Dalwallinu WA 6609	jophil3131@bigpond.com	0428 038 869
Dalwallinu Sports Club	Glenn Jones /Dan Jolly	PO Box 100 Dalwallinu WA 6609	dallysportsclub@westnet.com.au	0437 584 107
Dalwallinu Sunday Netball Group	Brian McAlpine	PO Box 23 Dalwallinu WA 6609	dalwallinunetball@gmail.com	
Dalwallinu Swim Club	Kirsty Cole	PO Box 376 Dalwallinu WA 6609	cole_family@live.com.au	0414 730 017
Dalwallinu Tai Chi	Barbara Newton			0437 969 812
Dalwallinu Toy Library	Kelly Carter		kellymutter@hotmail.com	
Kalannie Bowls Club	Julie Hathway	Post Office Kalannie WA 6469	locklandpark@wn.com.au	0427 335 578
Kalannie Community Association	Garry Crossman	Post Office Kalannie WA 6470	kca@kalannie.com.au	
Kalannie Community Resource Centre	Jodie Lyndon-James	Post Office Kalannie WA 6470	kalanniecrc@kalannie.com.au	9666 2194
Kalannie CWA	Julie Hathway	Post Office Kalannie WA 6469	locklandpark@wn.com.au	0427 335 578
Kalannie Football Club	Garry Crossman	Post Office Kalannie WA 6468	garrycrossman@rocketmail.com	0487 529 369

COMMUNITY GROUP CONTACTS				
Kalannie Junior Cricket Club	Rowan McCreery	Post Office Kalannie 6468	dannirowan@hotmail.com	0408 845 711
Kalannie Netball Club	Carmen Stanley	Post Office Kalannie WA 6469	tc@stanleyfarms.com.au	0417 033 324
Kalannie Playgroup		Post Office Kalannie WA 6468	playgroup@kalannie.com.au	
Kalannie Tennis Club		Post Office Kalannie WA 6468	tennis@kalannie.com.au	
Mainly Music	Teish Wallis	Baptist Church Dalwallinu WA 6609	teish@westnet.com.au	0427 611 162
Pithara Skidfest	Paul Calnan	PO Box 282 Dalwallinu WA 6610	sirgk@live.com.au	0400 007 300
Seniors Activity Group	Kathy Mills	PO Box 83 Dalwallinu WA 6609	nwkemills@wn.com.au	9661 1304
Wheatbelt Cricket Council	Mike Hind	Po Box 65 Northam WA 6401	michaelhind@live.com.au	0439 098 274
Yarra Yarra Catchment Group	Peter Syme		peter.syme@gmail.com	

RELIGIOUS & SERVICES ORGANISATIONS CONTACTS				
Group Name	Contact	Address	Email Address	Contact Number
Dalwallinu Anglican Church	Gwen Hyde	-		9661 1043
Dalwallinu Baptist Church	Colin Cail			0428 643 012
Dalwallinu Catholic Church	Fr Ian Esmond			9671 1202
Dalwallinu Christian Fellowship	Gerry Matias			0 458977 826
Dalwallinu Uniting Church				
Dalwallinu RSL	Rod Donnes			0427 611 218
SHIRE OF DALWALLINU		58 Johnston St Dalwallinu WA 6609	shire@dalwallinu.wa.gov.au	9661 0500
Dalwallinu Discovery Centre		53 Johnston St Dalwallinu WA 6609	library@dalwallinu.wa.gov.au	9661 1805